



Board of Elections | The City of New York

Annual Report 2016



TABLE OF CONTENTS

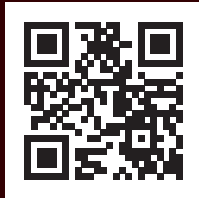
01	INTRODUCTION
02	COMMISSIONERS OF ELECTIONS IN THE CITY OF NEW YORK
03	MISSION STATEMENT
04	PRESIDENT'S MESSAGE
05	COMMISSIONERS' PROFILES
10	COUNSEL TO THE COMMISSIONERS
10	EXECUTIVE MANAGEMENT
11	SENIOR STAFF
11	BOROUGH OFFICES
13	CANDIDATE RECORDS UNIT
17	TURNOUT SUMMARY SPECIAL ELECTION – 02/23/2016
18	TURNOUT SUMMARY SPECIAL ELECTION – 04/19/2016
19	TURNOUT SUMMARY PRESIDENTIAL PRIMARY ELECTION – 04/19/2016
20	TURNOUT SUMMARY FEDERAL PRIMARY ELECTION – 06/28/2016
21	TURNOUT SUMMARY STATE AND LOCAL PRIMARY ELECTION – 09/13/2016
22	TURNOUT SUMMARY GENERAL ELECTION – 11/08/2016
23	COMMUNICATIONS AND PUBLIC AFFAIRS
26	VOTER REGISTRATION
33	ELECTION DAY OPERATIONS
45	VOTING EQUIPMENT OPERATIONS UNIT / POLL SITE MANAGEMENT
48	FACILITIES OPERATIONS
49	PROCUREMENT DEPARTMENT
50	ELECTRONIC VOTING SYSTEMS DEPARTMENT
54	PERSONNEL AND RECORDS MANAGEMENT
55	FINANCE
58	OFFICE OF THE GENERAL COUNSEL
60	MANAGEMENT INFORMATION SYSTEMS DEPARTMENT (MIS)
64	PAYROLL
65	CUSTOMER SERVICE
66	BALLOT MANAGEMENT DEPARTMENT
67	POLL SITE DEVICES UNIT
68	ADA COORDINATORS

The Board is headed by ten Commissioners, two from each borough representing both major political parties for a term of four years appointed by the New York City Council...

Board of Elections The City of New York

Introduction

Using your Smartphone, download a FREE QR Reader. Once downloaded, open the application and click the QR code to discover the Board's website.



...A similar bipartisan arrangement of over 351 deputies, clerks and other personnel ensures that no one party controls the Board of Elections. The Board appoints an executive staff consisting of an Executive Director, Deputy Executive Director and other senior staff managers charged with the responsibility to oversee the operations of the Board on a daily basis. Together, the executive and support staffs provide a wide range of electoral services to residents in Manhattan, The Bronx, Brooklyn, Queens and Staten Island.

The Commissioners of Elections meet every Tuesday at the Executive Office, in addition to the special hearings, legislative sessions and specific issue-oriented meetings (electronic voting, election legislation, labor management, rules and budget) during the calendar year.

Commissioners of Elections in the City of New York

	BOROUGH	PARTY
SIMON SHAMOUN	Brooklyn	Republican
JOHN FLATEAU	Brooklyn	Democrat
LISA GREY	Staten Island	Republican
MARIA R. GUASTELLA, PRESIDENT	Staten Island	Democrat
ROSANNA VARGAS	Bronx	Democrat
MICHAEL R. RENDINO	Bronx	Republican
FREDERIC M. UMANE, SECRETARY	Manhattan	Republican
ALAN SCHULKIN	Manhattan	Democrat
MICHAEL MICHEL	Queens	Republican
JOSE MIGUEL ARAUJO	Queens	Democrat



From left to right (top row): Alan Schulkin, John Flateau, Ph.D., Michael R. Rendino, Jose Miguel Araujo, Simon Shamoun
(bottom row): Lisa Grey, Maria Guastella, Frederick M. Umane, Rosanna Vargas

Inset:
Michael Michel



Mission Statement



The Board of Elections in the City of New York, as provided under Section 3-200 of the New York State Election Law, is responsible:

- 1. To conduct fair and honest elections, from local to federal levels;**
- 2. To enfranchise all eligible New Yorkers to register to vote and to practice those rights;**
- 3. To conduct elections, certify the canvass and to retain the official records;**
- 4. Voter outreach and education.**

Briefly stated, this means:

First, the preparation of the ballot for Primary, Special and General Elections to the extent that all vacancies for public office and party positions may be filled.

Second, that qualified voters may exercise their right to franchise and that every opportunity be given to voters to execute that right and to vote for whom they choose.

Third, that the votes of the electorate at Primary, Special and General Elections be properly canvassed and that a true count be given for each candidate voted for.

Finally, that we make every effort to inform and educate the voting public of their rights as a voter and also to reach out to all Americans to instruct them in the voting process.

The following pages of this report will illustrate some of the duties as classified in the above synopsis.

President's Message

2016 was an eventful year at the New York City Board of Elections with over six elections across the five boroughs. The hard-working and tireless efforts of our dedicated staff, under the supervision of our Executive Team, led by Michael J. Ryan, Executive Director; Dawn Sandow, Deputy Executive Director; Pamela Perkins, Administrative Manager and Georgea Kontzamanis, Operations Manager, provided the voters of the City of New York effective access to the voter franchise and taxpayer resources were utilized responsibly.

To continue efforts in improving the voting process, the Board of Elections acquired an additional 1,100 tablets to supplement the inventory of 3,000 tablets. Utilizing tablets further enhanced service to the voters by providing immediate access to important information and expedited election-day problem resolution. Upon closing of the polls, in the November 2016 Presidential Election, Unofficial Election night results were processed in record time. With over 2.5 million votes cast, 80% of results were reported by 10:00 pm and 92% by 11:00 pm.

The Board of Elections was pleased to announce the creation of an Accessibility Unit and the addition of two Americans with Disability Act Coordinators. This unit oversees the Board's compliance with the ADA and ensures voters with disabilities free and independent access to the voter franchise.

The Board successfully implemented an advertising campaign to recruit new poll workers. The advertisements were displayed citywide on subways, buses and Staten Island Transit. The campaign resulted in over 20,000 inquiries to the dedicated recruitment portal, over 5,700 completed poll worker applications and 1,400 individuals attended training, passed the exam and worked the most recent election cycle. The Board will continue efforts to encourage and recruit qualified poll workers to serve the voters of New York City.

On behalf of the Commissioners of the Board of Elections, a special thank you goes out to our fellow New Yorkers who answered the call and worked as polls workers, serving our Great City and Democracy. Such efforts are vital to the democratic process.

The Board's Annual Report further details recent accomplishments and future goals. We encourage all those interested to visit our website at www.vote.nyc.ny.us for more information including additional appendices not included in this printed version.

Respectfully Submitted,



Maria Guastella,
President for Year 2016



SIMON SHAMOUN, Commissioner

Simon Shamoun is the New York City Board of Election's Republican representative from Brooklyn, appointed by the New York City Council in 2013.

The son of immigrants, Mr. Shamoun is a product of both public and private schools including P.S. 104, Monsignor Farrell High School, Pace University and CUNY School of Law.

Mr. Shamoun is a partner at the law firm of Kampessis & Shamoun, representing clients in real estate and business matters and is admitted to practice law in New York and New Jersey and in the Southern and Eastern District Courts of New York.

Mr. Shamoun serves on the board of directors at the St. Nicholas Home adult residence in Bay Ridge, Brooklyn and is also a board member of the Salaam Club of New York, a charitable organization.



Brooklyn

JOHN FLATEAU, Commissioner

Dr. John Flateau is a Commissioner of the NYC Board Of Elections. He is a Professor of Public Administration and Political Science; and Director, Census Information Center at Medgar Evers College, CUNY. He was Chief of Staff and campaign coordinator for Mayor David Dinkins; Senior Vice President, Empire State Development Corp.; Executive Director, NYS Black, Hispanic & Asian Legislative Caucus; and instructor, District Council 37 AFSCME.

He is a Fellow, National Academy of Public Administration; member, National Conference of Black Political Scientists; former member of NYS LATFOR which conducted congressional and state legislative redistricting and ended prison based gerrymandering; and was a Commissioner, NYC Districting Commission. He was Deputy Secretary for Intergovernmental Relations, NYS Senate, co-managing the 2010 Census and Federal Stimulus Program. He was Chairman, US Census Advisory Committee On the Black Population; and Co-Chair, NYC Black Advisory Committee, Census 2000.

He is a strategist on seminal federal, state and local elections; electoral reform; and landmark voting rights litigation empowering communities of color. He is an architect of NYC and NYS statutory programs for job creation, business finance and government contracts for Minority and Women businesses. John has a BA in English Literature, New York University; MPA, Baruch College; M. Phil., M.A. and Ph.D. in Political Science in American Politics and Public Policy from The Graduate Center, CUNY. He is a member of Bridge St. AWME Church, the NAACP, VIDA and Brooklyn's Bedford Stuyvesant community.





LISA GREY, Commissioner

Lisa Grey came to the Board of Elections in 2016, when she was appointed the Republican Commissioner for Richmond County. Prior to her service with the Board, Ms. Grey served as Special Counsel to New York State Senator Andrew J. Lanza.

Ms. Grey is an attorney in private practice in Staten Island and had previously worked as an Assistant District Attorney in the Richmond County District Attorney's Office where she was assigned to the Sex Crimes/Special Victim's Bureau and the Supreme Court Bureau, Career Criminal and Counter Terrorism Unit.

Ms. Grey is a graduate of St. John's University and received her Juris Doctorate from Brooklyn Law School.

Ms. Grey resides in Staten Island with her husband Tim.

Staten Island



MARIA R. GUASTELLA ESQ., President

Maria R. Guastella is the Staten Island Democratic Commissioner and was unanimously appointed to the Board of Elections in the City of New York in 2011 by the New York City Council.

In January, 2012, she was duly elected President of the Commissioners of the Board of Elections in the City of New York.

Ms. Guastella began her legal career in 1994 working for the Legal Aid Society, Criminal Defense Division as a staff attorney. In 2001, Ms. Guastella opened her own law office and specializes in criminal defense litigation.

Ms. Guastella is a graduate of John Jay College of Criminal Justice and received her Juris Doctorate from City University of New York School of Law. She is admitted to practice law in the State of New York and the Southern and Eastern Districts of New York.

Ms. Guastella resides in Staten Island with her husband and two children.

MICHAEL A. RENDINO, Commissioner

Mike Rendino is the Bronx Republican Commissioner. A lifelong resident of the borough, Mr. Rendino has long been an active member in his community, serving as Chairman of the Economic Development Committee as well as Merchant Representative of the 161 Street Business Improvement District.

Mr. Rendino worked as a firefighter before injuries sustained during the September 11th relief effort forced him into retirement. Since then, he has become heavily involved in local politics, working on Mayor Michael Bloomberg's 2009 reelection campaign before running for New York State Assembly in 2010.

A graduate of St. John's University, he has a degree in sports management. In addition to his tireless community activism, Rendino runs a very successful small business located near Yankee Stadium.



Bronx

ROSANNA VARGAS, Commissioner

Rosanna Vargas is a litigation associate at the national law firm of Akerman LLP. The focus of her practice is litigating complex commercial disputes in the Federal and State Courts of New York.

Ms. Vargas was appointed by the New York City Council as the Bronx Democratic Commissioner of the Board of Elections in June of 2016. She is the youngest person appointed to that post. She was later elected and currently serves as secretary of the Board of Elections in the City of New York. Ms. Vargas brings to this position a wealth of insight because of her private and public service experience at the law firm and previously at the Bronx County Supreme Court and the Bronx County Civil Court.

Ms. Vargas received her Juris Doctorate degree from Touro Law Center in 2012 and was the recipient of the Exceptional Service to the Public and Community Award. Ms. Vargas is admitted to practice law in the State of New York, and to the Federal Courts in Southern, Eastern and Northern Districts of New York. She received her Bachelor of Science degree from Fordham University.





FREDERIC M. UMANE ESQ., Secretary

Frederic M. Umane has served as a commissioner of the New York City Board of Elections since 1995. A Republican from Manhattan, he was president of the Board during the 2005 mayoral election and has been active in local politics for more than twenty years.

An attorney, Mr. Umane is a partner at Zeichner Ellman & Krause and heads the firm's transactional banking, corporate and real estate group. He has substantial experience in bank regulatory matters and issues involving mortgage fraud, automobile and hotel finances.

Mr. Umane is admitted to the practice of law in New York State and the federal courts. He is an active member of the American Bar Association as well as the Associations of the Bar of the City of New York and New York State.

He received his J.D. from Albany Law School and his B.A. from Union University. Mr. Umane is married to Susan Umane and they have two children, Ryan and Bradley.

Manhattan



ALAN SCHULKIN, Commissioner

Alan Schulkin was appointed as the Democratic Commissioner to Manhattan County in September 2014. Prior to assuming this position, he had been the Deputy Chief Clerk at the Manhattan Borough Office of the Board of Elections in the City of New York since April 2014.

A graduate of University of Charleston, W. Va., Mr. Schulkin worked as a supervisor at the NYS Department of Social Services for 20 years, before transferring to the Department of Health, where he oversaw the audits of Medicare providers. He worked there for 10 years, when he was transferred to the Office of Medicaid Inspector General.

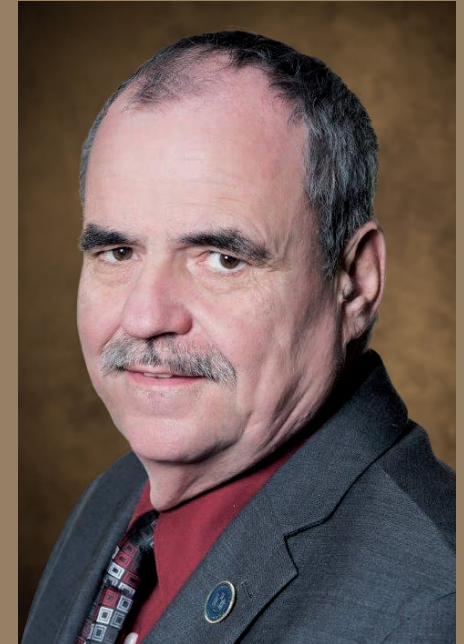
Mr. Schulkin currently resides in Manhattan.

MICHAEL MICHEL, President

Michael Michel came to Christ the King as Financial Director in 1992. He has since been appointed Director of Operations at Christ the King High School in 1994 and in 2006 was appointed President of Christ the King. Michael founded and serves as President of the Christ the King Daycare / Continuing Education.

In 2013, the City Council appointed Michael Queens Republican Commissioner of the NYC Board of Elections. In March 2014, Michael was also appointed to serve on the Board of All Faiths Cemetery.

Michael currently resides in Middle Village, NY, with his wife, the former Erika Schaefer, and his two daughters Janine and Laura.



Queens

JOSE MIGUEL ARAUJO ESQ., Commissioner

Jose Miguel Araujo was appointed to the New York City Board of Elections in 2008 and serves as the Democrat representative from Queens. He is currently serving as president.

A Democrat, Mr. Araujo graduated from John Jay College of Criminal Justice with a Bachelor of Science Degree in Criminal Justice. He went on to receive his Juris Doctorate from the City University of New York School of Law and is a practicing attorney in the areas concerning Criminal Guardianship/Article 81 of the Mental Hygiene Law, Wills and Estate and Real Estate.

As a member of the Board's Public Education Subcommittee, he was integral in the implementation of the citywide public education campaign intended to inform New Yorkers of new changes to the voting system resulting from the Congressional Help America Vote Act.

Mr. Araujo and his wife Rita live in Queens with their four sons Justen, Joel, Ricardo and Ariel.



Counsel to the Commissioners



KENNETH MOLTNER
Counsel to the
Commissioners of the
Board of Elections in the
City of New York



STEVE DENKBERG
Counsel to the
Commissioners of the
Board of Elections in the
City of New York

Executive Management



MICHAEL J. RYAN
Executive Director



DAWN SANDOW
Deputy Executive Director

Administrative Management



PAMELA GREEN PERKINS
Administrative Manager



GEORGIA KONTZAMANIS
Operations Manager

Senior Staff (Alphabetically Listed)

NINA CRISPINO

Director of Personnel / Records Management Officer

STEVEN B. DENKBERG

Counsel to the Commissioners

MARIE FABRIZI

Director of Equipment

STEVEN FERGUSON

Director of Management Information Services

BETH FOSSELLA

Coordinator of Voter Registration Activities

TROY JOHNSON

Coordinator of Candidate Records Unit

DANIEL LAVELLE

Coordinator of Customer Service

DEBRA LEIBLE

Coordinator of Election Day Operations

KENNETH MOLTNER

Counsel to the Commissioners

JOHN NAUDUS

Director of Electronic Voting Systems

JOHN P. O'GRADY

Chief Voting Machine Technician

STEVEN H. RICHMAN

General Counsel

THOMAS SATTIE

Ballot Management Supervisor

RAPHAEL SAVINO

Deputy General Counsel / Director of Campaign Finance Enforcement

NICHOLAS SQUICCIARINI

Facilities Manager

GERALD SULLIVAN

Finance Officer

SHERWIN SUSS

Agency Chief Contracting Officer

VALERIE VAZQUEZ

Director of Communications & Public Affairs

Borough Offices

MANHATTAN

200 Varick Street, New York, NY 10014

(212) 886-2100

GREG LEHMAN (left)

Chief Clerk

WILLIAM ANTHONY ALLEN (right)

Deputy Chief Clerk



BRONX

1780 Grand Concourse, Bronx, NY 10457

(718) 299-9017

ANTHONY RIBUSTELLO (left)

Deputy Chief Clerk

BRENDA CANDELARIO (right)

Deputy Chief Clerk



Borough Offices Cont'd

BROOKLYN

345 Adams Street, Brooklyn, NY 11201
(718) 797-8800

SALVATORE BARRERA (left)
Acting Brooklyn Deputy Chief

DANIEL ORTIZ (right)
Acting Brooklyn Deputy Chief



QUEENS

126-06 Queens Blvd, Kew Gardens, NY 11415
(718) 730-6730

BARBARA CONACCHIO (left)
Chief Clerk

BART HAGGERTY (right)
Deputy Chief Clerk

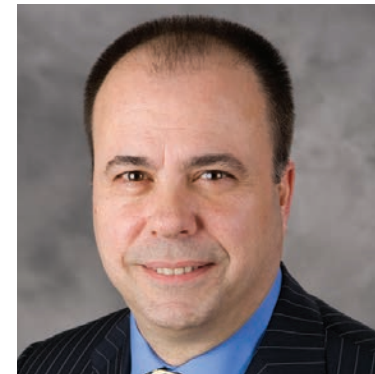


STATEN ISLAND

1 Edgewater Plaza, 4th Fl., Staten Island, NY 10305
(718) 876-0079

SHEILA DELGIORNO (left)
Chief Clerk

ANTHONY ANDRIULLI (right)
Deputy Chief Clerk



Candidate Records Unit



TROY JOHNSON
Coordinator, Candidate Records Unit

The Candidate Records Unit (CRU) of the Board of Elections in the City of New York is responsible for the receiving, recording, processing and tracking of all candidates and objector document filings as well as proofing of candidate names that achieve ballot status for Primary, General and Special Election Events.

The CRU staff maintains accurate candidate status on all these items in order to ensure an accurate ballot. The staff prepares, reviews, updates and corrects errors identified on all reports that feed the proofs of voting machine and paper (absentee, military, Ballot Marking Device, and standby emergency) ballots.

The unit also has a limited responsibility for receiving, recording and monitoring candidate compliance documents for In-Lieu-Of filers only as part of the Campaign Financial Disclosure requirements. CRU received 316 financial disclosure reports from various candidates, political party committees and political action committees in 2016.

Candidate Records Unit Cont'd

DESIGNATING PETITIONS

	New York	Bronx	Kings	Queens	Richmond	Total
Number Received	373	138	811	318	205	1845
Number Challenged	50	76	133	73	280	612
Number of Specs Filed	33	11	30	20	67	161
Number Invalidated by Board	57	439	354	178	30	1058
Number of Court Cases	11	18	10	13	2	53
Number of Court Cases Upholding Board Position	7	14	6	9	2	37
Number of Court Cases Reversing Board Position	4	4	4	4	0	16

NOMINATING PETITIONS

	New York	Bronx	Kings	Queens	Richmond	Total
Number Received	38	17	1	8	0	64
Number Challenged	2	15	0	0	0	17
Number of Specs Filed	0	4	0	0	0	4
Number Invalidated by Board	21	18	16	8	6	69
Number of Court Cases	0	1	0	0	0	1
Number of Court Cases Upholding Board Position	0	0	0	0	0	0
Number of Court Cases Reversing Board Position	0	1	0	0	0	1

CAMPAIGN FINANCE SUMMARY

	New York	Bronx	Kings	Queens	Richmond	Total
Number of County Committee Filers	27	18	15	8	3	71
Number of Candidate Filers	0	0	0	0	0	0
Number of PAC Filers	0	0	0	0	0	0
Total Number of Filings Received	115	65	75	38	23	316
Total Number of In-Lieu-Of Filings	4	0	0	0	0	4
Number of Five-Day Letters Sent	0	0	0	0	0	0
Number of Delinquent Filings	93	30	120	69	10	322
Number Referred to County Attorney or DA	0	0	0	0	0	0

Candidate Records Unit Cont'd

GENERAL ELECTIONS TURNOUT

	Registered Voters	Voter Turnout	Percentage
2016 Presidential	4,470,670	2,759,922	62%
2015 Judicial	3,938,116	236,251	6%
2014 Governor	4,151,378	1,042,968	25%
2013 Mayor	4,245,309	1,102,400	26%
2012 President	4,224,811	2,447,897	58%
2011 Judicial	3,999,941	184,265	5%
2010 Governor	4,081,567	1,366,982	33.49%
2009 Mayor	4,095,561	1,154,802	28.2%
2008 President	4,119,923	2,615,770	61.45%
2007 Judicial	3,856,342	Non-citywide	Non-citywide
2006 Governor	3,799,353	1,244,874	32.77%
2005 Mayor	3,944,831	1,315,360	33.34%
2004 President	4,002,497	2,459,652	61%
2003 Council	3,667,266	Non-citywide	Non-citywide
2002 Governor	3,832,437	1,415,095	37%
2001 Mayor	3,715,022	1,520,443	41%
2000 President	3,672,265	2,282,944	62%
1999 Judicial	3,426,017	Non-citywide	Non-citywide
1998 Governor	3,415,858	1,537,010	45%
1997 Mayor	3,514,974	1,409,347	40%
1996 President	3,532,348	2,028,013	57%
1995 Judicial	3,151,812	Non-citywide	Non-citywide
1994 Governor	3,246,464	1,576,160	48%
1993 Mayor	3,301,683	1,898,437	57%
1992 President	3,360,568	2,211,473	66%
1991 Council	2,962,958	Non-citywide	Non-citywide

Candidate Records Unit Cont'd

GENERAL ELECTIONS TURNOUT (CONTINUED)

	Registered Voters	Voter Turnout	Percentage
1990 Governor	3,052,259	1,159,134	38%
1989 Mayor	3,183,741	1,899,845	60%
1988 President	3,017,013	2,126,418	70%
1987 Judicial	2,514,605	Non-citywide	Non-citywide
1986 Governor	2,614,470	1,288,842	49%
1985 Mayor	2,842,517	1,170,904	41%
1984 President	3,014,459	2,340,181	78%
1983 Judicial	2,489,526	Non-citywide	Non-citywide
1982 Governor	2,544,394	1,685,956	66%
1981 Mayor	2,345,001	1,305,368	56%
1980 President	2,525,464	2,013,164	80%
1979 Judicial	2,237,193	Non-citywide	Non-citywide
1978 Governor	2,714,331	1,526,574	56%
1977 Mayor	2,887,530	1,486,536	51%
1976 President	2,720,105	2,143,345	79%
1975 Judicial	2,912,126	Non-citywide	Non-citywide
1974 Governor	3,161,656	1,822,567	58%
1973 Mayor	3,565,147	1,790,053	50%
1972 President	3,067,749	2,267,237	73%
1971 Judicial	3,068,015	Non-citywide	Non-citywide
1970 Governor	3,046,373	2,290,020	75%
1969 Mayor	3,026,745	2,458,203	81%
1965 Mayor	3,281,689	2,652,451	80%
1961 Mayor	3,239,879	2,467,546	76%
1957 Mayor	2,442,888	2,224,054	91%
1953 Mayor	2,369,858	2,244,146	93%

Turnout Summary Special Election – 02/23/2016

TURNOUT VS. ENROLLMENT

	Turnout	Eligible Active Voters as of 2/04/2016	
BX	3,764	71,136	5%
Total	3,764	71,136	5%

TURNOUT BY BALLOT TYPE

	Eligible Active Voters as of 4/16/2015	Public Counter	Eme	Abs/Mil	Fed	FWAB	Pres	Aff	BMD Aff
KG	71,136	3,585	0	88	0	0	0	91	0
Total	71,136	3,585	0	88	0	0	0	91	0

Turnout Summary Special Election – 04/19/2016

TURNOUT VS. ENROLLMENT

	Turnout	Eligible Active Voters as of 3/31/2016	
NY	19,938	65,454	30%
KG	18,807	64,091	29%
RH	15,945	76,021	21%
Total	54,690	205,566	27%

TURNOUT BY BALLOT TYPE

	Eligible Active Voters as of 3/31/2015	Public Counter	Eme	Abs/Mil	Fed	FWAB	Pres	Aff	BMD Aff
NY	65,454	18,937	0	250	0	0	0	751	0
KG	64,091	18,286	0	156	0	0	0	365	0
RH	76,021	15,479	0	401	0	0	0	65	0
Total	205,566	52,702	0	807	0	0	0	1,181	0

Turnout Summary Presidential Primary Election – 04/19/2016

TURNOUT VS. ENROLLMENT

	Turnout	Eligible Active Voters as of 3/31/2016	
NY	319,071	719,803	44%
BX	161,019	529,879	30%
KG	336,129	966,735	35%
QN	247,468	792,082	31%
RH	60,151	216,227	28%
TOTAL	1,123,838	3,224,726	35%

TURNOUT BY BALLOT TYPE

	Eligible Active Voters as of 3/31/2016	Public Counter	Eme	Abs/Mil	Fed	FWAB	Pres	Aff	BMD Aff
NY	719,803	297,767	21	8,968	3,413	14	0	8,888	0
BX	529,879	149,413	0	3,142	424	0	0	8,040	0
KG	966,735	319,390	67	6,717	1,100	0	0	8,855	0
QN	792,082	234,548	71	6,593	1,202	0	0	5,054	0
RH	216,227	56,832	2	2,521	151	1	0	644	0
TOTAL	3,224,726	1,057,950	161	27,941	6,290	15	0	31,481	0

Turnout Summary Federal Primary Election – 06/28/2016

TURNOUT VS. ENROLLMENT

	Turnout	Eligible Active Voters as of 6/09/2016	
NY	86,198	628,799	14%
BX	16,484	332,386	5%
KG	15,550	283,731	5%
QN	14,754	357,998	4%
TOTAL	132,986	1,602,914	8%

TURNOUT BY BALLOT TYPE

	Eligible Active Voters as of 6/09/2016	Public Counter	Eme	Abs/Mil	Fed	FWAB	Pres	Aff	BMD Aff
NY	628,799	81,092	11	3,335	1,339	0	0	421	0
BX	332,386	15,258	0	887	87	0	0	252	0
KG	283,731	14,517	3	746	200	0	0	84	0
QN	357,998	12,847	1	1,698	170	1	0	37	0
TOTAL	1,602,914	123,714	15	6,666	1,796	1	0	794	0

Turnout Summary State and Local Primary Election - 09/13/2016

TURNOUT VS. ENROLLMENT

	Turnout	Eligible Active Voters as of 8/28/2016	
NY	60,909	484,187	13%
BX	40,457	458,583	9%
KG	83,896	967,281	9%
QN	33,995	366,607	9%
RH	3,862	35,823	11%
TOTAL	223,119	2,312,481	10%

TURNOUT BY BALLOT TYPE

	Eligible Active Voters as of 8/28/2016	Public Counter	Eme	Abs/Mil	Fed	FWAB	Pres	Aff	BMD Aff
NY	484,187	58,373	22	2,226	0	0	0	288	0
BX	458,583	38,295	0	1,832	0	0	0	330	0
KG	967,281	79,910	1	3,486	0	0	0	499	0
QN	366,607	31,598	1	2,213	0	0	0	183	0
RH	35,823	3,554	0	299	0	0	0	9	0
TOTAL	2,312,481	211,730	24	10,056	0	0	0	1,309	0

Turnout Summary General Election – 11/08/2016

TURNOUT VS. ENROLLMENT

	Turnout	Eligible Active Voters as of 10/25/2016	
NY	673,111	984,680	68%
BX	402,977	690,599	58%
KG	810,505	1,400,221	58%
QN	691,209	1,114,158	62%
RH	182,120	281,012	65%
TOTAL	2,759,922	4,470,670	62%

TURNOUT BY BALLOT TYPE

	Eligible Active Voters as of 10/25/2016	Public Counter	Eme	Abs/Mil	Fed	FWAB	Pres	Aff	BMD Aff
NY	984,680	609,629	359	34,751	10,243	99	1	18,029	0
BX	690,599	368,974	86	11,054	1,171	19	17	21,656	0
KG	1,400,221	758,590	766	23,202	4,072	15	3	23,857	0
QN	1,114,158	642,052	240	22,673	3,544	22	2	22,676	0
RH	281,012	169,912	3	8,314	512	20	23	3,336	0
TOTAL	4,470,670	2,549,157	1,454	99,994	19,542	175	46	89,554	0



VALERIE VAZQUEZ
Director of Communications and
Public Affairs

One of the Board's top priorities is to ensure that every Election Day is implemented as smoothly as possible. To raise awareness and understanding about the voting system, the Board continued its education efforts in 2016 with the main focus on voter registration and poll worker recruitment.

As a trained poll worker corps is an essential element of any successful Election Day, the Board took steps to provide poll workers with the knowledge and tools necessary to successfully implement the Election. A key element of this preparation was a heavy focus on poll worker and interpreter recruitment to assist in replenishing a robust poll worker corps. As a result, the Board's 2016 public education campaign centered on a multi-pronged approach:

1. Continued voter education to raise awareness and prepare voters to use the voting system;
2. Recruitment of eligible New York City voters to serve as poll workers and interpreters and to provide them with real time experience with voters using the system on Election Day; and
3. Increasing voter registration by attempting to register new voters at all scheduled outreach events.

2015 Public Education Campaign Goals

- Continue to Educate NYC Voters
- Recruit New Poll Workers / Register new Voters

The 2016 Public Education Program targeted voters in all five boroughs. This included first time voters as well as senior citizens, multicultural voters, and voters with disabilities. By Federal mandate, all public educational material was provided in English, Spanish, Chinese, Korean and Bengali.

The public education campaign continued to use and build upon a surround-sound communications approach that delivered key messages and engaged targeted audiences in voter education efforts and recruitment opportunities. Due to New York City's diverse voter population, the Board implemented a campaign that integrated a range of tactics including stakeholder engagement, digital outreach, materials development and earned media.

Communications and Public Affairs Cont'd

For the first time ever the Board launched an outdoor transit media campaign across all 5 boroughs. The ads were placed in trains and buses that crossed all Boroughs. The campaign was a huge success and resulted in the largest number of poll workers recruited.

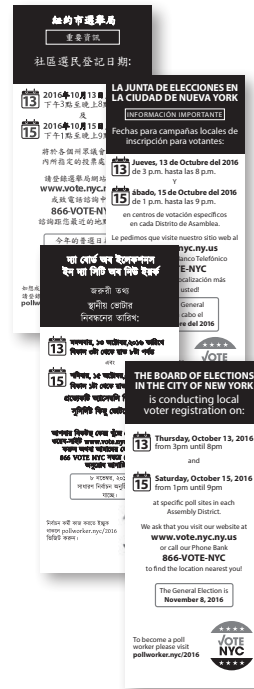
- Bipartisan Outreach team members attended events across the city to encourage eligible voters to serve as poll workers while educating and preparing voters for Election Day.

The Board also leveraged our legal ads to:

- Outreach was continued to key stakeholders to enlist their support in educating audiences about the new voting system and encouraging poll worker applicants.
- Social media engagement was ramped up to further grow the Board's digital audiences and stakeholders.
- Educational materials in multiple languages were distributed at community events and made available on the Board's website.

Additional highlights of the 2016 public education campaign include:

- The Board's continued posting of online sample ballots in the Board's efforts to assist in preparing voters to use the new voting system.
- The Board's outreach team continued to proactively engage local community groups throughout New York City in addition to elected officials to encourage voter education and poll worker recruitment.



- The outreach team staffed community events throughout all five boroughs to educate voters about the new voting system, recruit eligible residents to serve as poll workers or interpreters, as well as register voters.
- On Election Day, the team engaged with NYC voters through timely Facebook postings and Twitter messages starting when the poll sites opened and continuing until the poll sites closed.

The home page of the Board's website prominently features tools and resources working towards the Board's priorities — including public education on voting, poll site locator, and sample ballots, as well as information on voter registration, poll worker recruitment, and absentee voting. The website also features sections devoted to specific audiences, such as voters, candidates, and poll workers. With the click of the mouse, users will also be able to translate the entire NYC BOE website into Spanish, Chinese, Russian, Korean, or Bengali, enlarge their text and share the entire webpage with a friend. The website also highlights the Board's social media pages. One of the Board's priorities for 2017 is for the complete redesign of the existing site to become more user friendly.



The Board's website had a total of 3.54 million visitors, with 1.07 million clicks to the poll site locator.

Communications and Public Affairs Cont'd

NEW DESIGN OF DEDICATED MAILING PRIOR TO GENERAL ELECTION:

In an effort to improve communications with the voters, the annual Voter Information Notice Mailer was significantly changed in the past year. Originally, all five languages were printed in one mailer and distributed to all voters. The new version provided the following segmentation:

- Queens voters received the Voter Information Notice in all five covered languages: English, Spanish, Chinese, Korean, and Bengali
- Bronx and Staten Island voters received the Voter Information Notice in English and Spanish
- Manhattan and Brooklyn voters received the Voter Information Notice in English, Spanish and Chinese

By using this targeted approach that reflects the federal language assistance requests, the Board was able to more effectively deliver information to the voters and create better print efficiencies for current and future mailings.

In addition, the Board added an additional voter tear card with all the pertinent information the voter would need including their poll site, address, ED/AD and other useful information. We are happy to report that we received positive feedback on this improvement and found many voters bringing their notice with them to the poll site and were able to save time by avoiding the information table line.

Bring card to poll site and go directly to ED/AD table.
Traiga esta tarjeta al centro de votación y diríjase a la mesa electoral (ED/AD).
বিকল্পভাবে কার্ডটি ভোটকেন্দ্রে সাথে করে নিয়ে আসুন এবং সরাসরি ছাপার ছাড়া/এডি টেবিলে চলে যান।

When to Vote: Primary Election: Tuesday, September 13, 2016 General Election: Tuesday, November 8, 2016	Quando Votar: Elección Primaria: Martes, 13 de septiembre del 2016 Elección General: Martes, 8 de noviembre del 2016	投票日期: 初選: 2016年9月13日 星期二 普選: 2016年11月8日 星期二	When to Vote: Primary Election: Tuesday, September 13, 2016 General Election: Tuesday, November 8, 2016	Quando Votar: Elección Primaria: Martes, 13 de septiembre del 2016 Elección General: Martes, 8 de noviembre del 2016	投票日期: 初選: 2016年9月13日 星期二 普選: 2016年11月8日 星期二
--	---	--	--	---	--

Bring card to poll site and go directly to ED/AD table.
Traiga esta tarjeta al centro de votación y diríjase a la mesa electoral (ED/AD).
বিকল্পভাবে কার্ডটি ভোটকেন্দ্রে সাথে করে নিয়ে আসুন এবং সরাসরি ছাপার ছাড়া/এডি টেবিলে চলে যান।

When to Vote: Primary Election: Tuesday, September 13, 2016 General Election: Tuesday, November 8, 2016	Quando Votar: Elección Primaria: Martes, 13 de septiembre del 2016 Elección General: Martes, 8 de noviembre del 2016	投票日期: 初選: 2016年9月13日 星期二 普選: 2016年11月8日 星期二	When to Vote: Primary Election: Tuesday, September 13, 2016 General Election: Tuesday, November 8, 2016	Quando Votar: Elección Primaria: Martes, 13 de septiembre del 2016 Elección General: Martes, 8 de noviembre del 2016	投票日期: 初選: 2016年9月13日 星期二 普選: 2016年11月8日 星期二
--	---	--	--	---	--

Bring card to poll site and go directly to ED/AD table.
Traiga esta tarjeta al centro de votación y diríjase a la mesa electoral (ED/AD).
বিকল্পভাবে কার্ডটি ভোটকেন্দ্রে সাথে করে নিয়ে আসুন এবং সরাসরি ছাপার ছাড়া/এডি টেবিলে চলে যান।

When to Vote: Primary Election: Tuesday, September 13, 2016 General Election: Tuesday, November 8, 2016	Quando Votar: Elección Primaria: Martes, 13 de septiembre del 2016 Elección General: Martes, 8 de noviembre del 2016	投票日期: 初選: 2016年9月13日 星期二 普選: 2016年11月8日 星期二	When to Vote: Primary Election: Tuesday, September 13, 2016 General Election: Tuesday, November 8, 2016	Quando Votar: Elección Primaria: Martes, 13 de septiembre del 2016 Elección General: Martes, 8 de noviembre del 2016	投票日期: 初選: 2016年9月13日 星期二 普選: 2016年11月8日 星期二
--	---	--	--	---	--

Voter Registration



BETH FOSSELLA
Coordinator, Voter Registration

As the Coordinator of the Voter Registration Department, I am, along with my staff, responsible for all activities that pertain to registering people to vote in the five boroughs of New York. This includes:

- Overseeing the Boroughs' responsibility to maintain the records of all registered voters. The total number of registered voters in the City of New York for 2016 according to the New York State Board of Elections Data Base is **4,927,362**. These numbers include both Active and Inactive voters (Active voters – **4,477,091**; Inactive voters – **450,271**). These figures are run twice a year on March 1st and November 1st of each year and are posted on the New York State Board Web Site.

- Reaching out to all eligible voters in the City of New York and making them aware of the importance of being a registered voter and how much their vote counts. This is accomplished through:

1. Conducting registration drives at various community activities and locations (street fairs, work fairs, community organization meetings, senior citizen community centers) and providing materials that explain the voting process.
2. Working with the Department of Education by visiting the high schools within the city informing and providing students, who are going to be eligible to vote, with registration applications as well as material that help explain the process of voting.
3. Distribution of voter registration material to the public. It is to be noted that all voter registration material is translated, in accordance to law, in the five languages – English, Spanish, Chinese, Korean and Bengali.

- Providing and making sure that all registration material is updated in accordance with New York State Law.

- Registration applications are broken down as follows:

- Regular registrations
- Agency registrations
- Department of Motor Vehicles

These registration applications are broken down by Code:

- No Code - Regular registrations
- Code 9 - Selected City agencies which fall under Local Law 29
- Code D - CUNY

- In 2002, Congress passed and the President of the United States signed into law the "Help America Vote Act" (HAVA). This was the means by which the Federal government committed to fund sweeping election reforms which would enhance the voting process in this country. Previously, a potential voter was not asked to provide a means of identification when filling out a registration application. Once

Voter Registration Cont'd

HAVA took effect, identification was required. Effective January 1, 2006 all first time voter registrants within the State of New York have to provide the same information heretofore requested of voters who registered by mail after January 1, 2003. In order to accommodate the voter, the registration application was re-designed to provide a box where this "HAVA ID" information was required. Those who did not provide the necessary identification information will receive a "First Time Voter Letter", asking them to provide the identification information. If no identification was sent by the time of the election, the voter will be asked to provide this information at the poll site, and if he/she still does not provide it, will not be allowed to vote on the machine, but will have to vote by affidavit ballot.

- Ordering and tracking all voter registration material, both in the Brooklyn Voting Machine Facility where voter registration is stored, as well as in the General Office.
- Making sure that all Voter Registration material is updated and translated into the five languages required by law, English, Spanish, Chinese, Korean and Bengali.
- In 2010 the NYS Board of Elections redesigned the registration application to include "Organ Donor" information that is sent to the Board of Health on a weekly basis.
- In 2011 the State Board of Elections redesigned the absentee ballot application.
- Providing and updating all voter registration information that must be put up on the Board of Election's web page. This information is done in English, Spanish, Chinese, Korean and Bengali.
- In 2015 the New York State Registration application had two new parties added to the list of enrollment parties on the registration application. The parties were the Women's Equality Party and the Reform Party. These parties were added to the 2016 Revised Registration Application.
- Providing Russian translation "Registration and Voting" booklet on the web page with English registration application. (As per NYS Law ELEC 3-506)

CODE 9 – AGENCY REGISTRATION

In May 2000, the New York City Council passed legislation (Local Law 29) which requires that 20 City agencies must provide voter registration applications to their clients, contractors, sub-contractors (literally anyone with whom they come in contact) in the performance of services, mailings and whatever other transactions take place on a daily basis.

The law requires that the Board of Elections supply these agencies with all the materials they will need in the performance of these tasks, i.e. registrations applications, display boxes, booklets, posters in all the five languages that are required by law (English, Spanish, Chinese, Korean and Bengali). The total number of Code "9" registration

applications that were given out in 2016 were:

English	213,000
Spanish	83,000
Chinese	31,000
Korean	27,000
Bengali	26,000

TOTAL NUMBER OF CODE "9" PROCESSED BY BOROUGH IN 2016

Manhattan	3,649
Bronx	3,790
Brooklyn	5,638
Queens	4,985
Staten Island	951

CUNY (THE CITY UNIVERSITY OF NEW YORK)

CUNY requested **73,000** Code "D" registration applications to be delivered to the designated offices of the CUNY schools. The "Code "D" registration applications are designated with a "D" in a small box at the upper left hand corner of the registration application. This enables the board to track how many of these registrations are processed.

TOTAL NUMBER OF CODE "D" PROCESSED BY BOROUGH IN 2016:

Manhattan	1,891
Bronx	2,918
Brooklyn	5,375
Queens	6,345
Staten Island	1,775

TOTAL NUMBER OF REGISTRATIONS RECEIVED IN GENERAL OFFICE 2016 FOR THE 5 BOROUGHS - 454,306

REG	320,698
DMV	47,304
AGENCY	48,987
CODE 9	19,013
CODE D	18,304

Voter Registration Cont'd

INFORMATION NOTICES

In August of each year the Board of Elections sends out Voter Information Notices to all Active and Inactive Registered Voters. These Information Notices give the voter all the necessary information regarding the upcoming elections as well as informing the voter where his Poll Site is and what district the voter must vote.

Many voters had commented in the past that their Poll Site has been changed and they were not aware of it, so that when they went to vote they had to vote at another Poll Site.

In 2005, the Information Notices were redesigned to include notice to the voter that he/she had a Poll Site change.

- The Normal file – the poll site remained the same.
- The Bold file – the poll site has been changed.

The 2016 Information Notice was re-designed to include the instructions for the use of the new voting machine, plus a removable card which contained the voter's Election District, Assembly District and Party Enrollment.

In August of 2016 Information Notices **4,191,304-TOTAL – ACTIVE VOTERS ONLY**

2016 BOARD OF ELECTIONS VOTER INFORMATION NOTICES

Mail Dates	Queens	Manhattan	Brooklyn	Bronx	Staten Island
8/1/2016	1,051,108	–	–	–	–
8/3/2016	–	–	–	653,081	267,695
8/5/2016	–	902,860	1,316,560	–	–

The Confirmation Notices are sent out to the voters whose Information Notice was returned to the Board of Election as **"Undeliverable"**. Confirmation Notices are sent to check again whether a voter is indeed not living at the address which appeared on the Information Notice.

If the Confirmation Notice is returned **"Undeliverable"**, then the voter is made INACTIVE. The Inactive code is **X**. This voter goes from an Active to an Inactive ("A" to "X") status.

LIBRARIES AND POST OFFICES

In January, we began the distribution of our usual supply of registration applications (in all five languages) to all the libraries and post offices in New York City. Included with these were posters, a display box and order forms which could be faxed to us

requesting replacement supplies. The registration applications were self contained in a Registration Display box that made distribution of the registration applications easier to display. Also included in these Display Boxes were Poll Worker Applications.

The total number of Registration Forms distributed for **2016** were as follows:

Post Offices – 224 Libraries – 217
TOTAL – 28,000 registrations **TOTAL – 27,125 registrations**

REGISTRATION SUMMARY FROM ALL SOURCES

NUMBER OF NEW REGISTRANTS PROCESSED IN 2016	503,609
NUMBER OF MOVERS WITHIN COUNTY PROCESSED IN 2016	206,762
TOTAL NUMBER OF ENROLLMENT CHANGES	155,753
TOTAL NUMBER OF DUPLICATES	40,310

CANCELLATIONS

TOTAL NUMBER OF REGISTRATIONS CANCELLED	35,849
NUMBER OF CANCEL NOTICES SENT TO OTHER COUNTIES	3,408
NUMBER OF CANCEL NOTICES SENT TO SBOE FOR OTHER STATES. WE DO NOT RECEIVE OUT-OF-STATE CANCELLATIONS TO SEND TO THE STATE BOARD	N/A

GENERAL INFORMATION

NUMBER OF MILITARY VOTERS ON FILE IN THE COUNTIES	2,179
NUMBER OF PERM/DISABLED VOTERS ON FILE IN THE COUNTIES	37,664
NUMBER OF SPECIAL FEDERAL VOTER ON FILE IN COUNTIES	25,554
NUMBER OF INACTIVE VOTER ON FILE AS OF DECEMBER 31,2010	427,497

The total number of registrations is posted on the NYS Board of Elections. They are produced twice a year - April 1st and November 1st. Below are the numbers the public are to follow:

- Go to www.vote.nyc.ny.us
- Link to State Board – www.elections.state.ny.us
- Enrollment totals for 5 boroughs as of November 1, 2016

Voter Registration Cont'd

NYS VOTER ENROLLMENT BY COUNTY, PARTY AFFILIATION AND STATUS — Voters Registered as of November 1, 2016

Region	County	Status	DEM	REP	CON	GRE	WOR	IND	WEP	REF	OTH	BLANK	Total
Within NYC	Bronx	Active	533,090	39,637	2,969	673	2,764	13,601	236	19	112	97,741	690,842
Within NYC	Bronx	Inactive	68,118	5,857	438	77	515	2,110	11	0	21	14,416	91,563
Within NYC	Bronx	Total	601,208	45,494	3,407	750	3,279	15,711	247	19	133	112,157	782,405
Within NYC	Kings	Active	990,147	119,597	4,607	2,858	5,374	29,950	299	27	483	247,430	1,400,772
Within NYC	Kings	Inactive	86,479	10,091	437	339	683	3,431	1	1	48	24,232	125,742
Within NYC	Kings	Total	1,076,626	129,688	5,044	3,197	6,057	33,381	300	28	351	271,662	1,526,514
Within NYC	New York	Active	674,501	92,297	1,734	1,947	1,969	28,465	209	37	541	183,401	985,101
Within NYC	New York	Inactive	85,544	17,686	285	320	334	5,917	2	0	114	31,097	142,299
Within NYC	New York	Total	760,045	109,983	2,019	2,267	2,303	34,382	211	37	655	214,498	1,126,400
Within NYC	Queens	Active	724,821	122,888	5,397	1,666	3,475	27,622	290	33	306	232,591	1,119,089
Within NYC	Queens	Inactive	46,637	8,173	402	125	293	2,198	2	0	36	15,574	73,440
Within NYC	Queens	Total	771,458	131,061	5,799	1,791	3,768	29,820	292	33	342	248,165	1,192,529
Within NYC	Richmond	Active	125,048	81,224	4,433	380	1,138	9,678	51	22	124	59,189	281,287
Within NYC	Richmond	Inactive	8,656	4,526	254	32	106	705	0	0	8	3,940	18,227
Within NYC	Richmond	Total	133,704	85,750	4,687	412	1,244	10,383	51	22	132	63,129	299,514
Within NYC Total		Active	3,047,607	455,643	19,140	7,524	14,720	109,316	1,085	138	1,566	820,352	4,477,091
Within NYC Total		Inactive	295,434	46,333	1,816	893	1,931	14,361	16	1	227	89,259	450,271
Within NYC Total		Total	3,343,041	501,976	20,956	8,417	16,651	123,677	1,101	139	1,793	909,611	4,927,362

* Please note that the numbers in the chart reflect both active and inactive voters.

Voter Registration Cont'd

INFORMATION REGARDING MAILING FORM NOTICES FOR 2016 THAT WERE SENT FROM THE GENERAL OFFICE ALL BOROUGHES: Daily Count Form Notices from January 01, 2016 to December 31, 2016

Borough	New Voters Acknowledgements	Change Acknowledgements	Transfers	Confirmations	Cancellations	TOTAL BY BOROUGH
Manhattan	79,936	40,734	48,078	142	1,634	170,524
Bronx	42,703	35,224	34,049	1,041	961	113,978
Brooklyn	68,805	87,659	53,457	142	961	210,808
Queens	64,895	37,938	41,426	114	1,664	146,037
Staten Island	13,805	9,814	9,642	11	332	33,604
TOTALS BY FORM	123,082	211,369	16,652	1,444	5,342	674,951

VOTER REGISTRATION OUTREACH EVENTS

Bronx

Preston High School
Allerton Library
Francis Martin Library
Bronx Library Center
Grand Concourse Library
Morrisania Library
Golden Palace
Hunts Point Community School
Boogie on the Boulevard
NAICA, EAST
43rd precinct
47th precinct
Old Timer's Event in Crotona Park
The Bronx Zoo
Back to school rally STREET FAIR
Concourse Village
Boogie on the Boulevard
Family Baptist Church
IS 192
Bronx House
Mount Hope Community Center
St.Barnabas Nursing Home

Brooklyn

Public School 138
St. Joseph College
P.S. 40 George W. Carver
Chase Bank
Medgar Evers College
Medgar Evers College
Unity Preparatory Charter School
Unity Preparatory Charter School
Brooklyn Technical School
Medgar Evers college
Ebbets field
Audrey Johnson Day Care Learning Center
Coffey Park
CAMBA Inc.
Youth & Community Development Organization
Ebbets Field Middle School 352
395 Lenox Road
Irving Square Park
FDR HS College Career Community Fair
Guyler Gore Park
Marcy Avenue Between Jefferson Avenue and Halsey Street
Summer Stroll on Third Avenue Between 69th Street and 80th St
Linden Park Vermont Ave. Bet. Stanley Ave and Linden Blvd.
Brownsville Jobs Plus
Summer Stroll On Third Avenue Between 80th Street and 90th St.
Sheraton Bklyn, NY Hotel

Cooper Street Block Party
Annual Community Health Fair
Brownsville Job Plus Annual Night Out
National Night Out Against Crime
Summer Stroll On 3rd Ave. Between 69th St. and 80th St.
Breukelen Annual Friends and Family Celebration
Summer Stroll on 3rd Ave Between 80th St and 90 St
1200-1300 Dean Street Between New York and Brooklyn Avenue
Red Hook Old Timers Committee Annual Back To School
Health Fair
Annual Community Family Health Fair Day
Health Fair Sunset Park Recreational Center
Taste of 5th Avenue Event
Poll Workers Meeting With Concerns About Election Day
STV 2016 Stop The Violence With a Twist
Howard Avenue Youth Basketball League
Family Day
Recruitment for Poll Workers
Student Life Club Fair
Myrtle Avenue Street Festival
National Voter Registration Day
One Brooklyn Resource Fair
Kingsborough's Fall 2016 Job And Internship Fair
12th Annual Bed-Stuy Alive Week Gala Kick-Off Street Festival.
Belvedere Senior Living Community
Brooklyn Center For Independence of the Disabled

Voter Registration Cont'd

Manhattan

The Fighting 69th Republican Club
New York City Campaign Finance Board
The City College of New York
National Black Leadership on AIDS Inc.
Global Learning Collaborative
Harlem Community Development Corp.
NYC Mission Society, Drew Hamilton Cornerstone
140th Street Alumni Association
Washington Houses Resident Association
Friends of the 13th Precinct National Night Out Against Crime
BEAMS Ministry's Health Fair
Chinese Chambers of Commerce of New York
National Voter Registration Day

Queens

George Washington Carver H.S.
Queensborough Community College
Birch Family Services School
HELP Hollis Apartments
Queens Community House
Flushing Meadow Corona Park
IS 192
The Shekinah Youth Church
Springfield Park
Rainey Park
Big Six Apartments
Hollis South Library
Resorts World

Staten Island

Turtle Circle in Midland Beach
Historic Richmond Town

HAVA

NYC Campaign Finance Board Department of Homeland Services
NYC Campaign Finance Board Department of Homeland Services
New York Career Fair Holiday Inn Midtown 57th
The 69th Precinct Community Council
Bronx Clergy Task Force
NYC Campaign Finance Board Department of Homeland Services
NYC Campaign Finance Board Department of Homeland Services

Lehman College
AHRC New York City (Demo)
Harlem RBI
New York Career Fair Holiday Inn Midtown 57th
St Matthews Baptist Church Adult Ministry
St Matthews Baptist Church Adult Ministry
AHRC New York City
NYC Campaign Finance Board Department of Homeland Services
NYC Campaign Finance Board Department of Homeland Services
NYC Campaign Finance Board Department of Homeland Services
New York Career Fair Holiday Inn Midtown 57th
68th Precinct Community Council (National Night Out)
Brooklyn Chambers Of Commerce
NYC Campaign Finance Board Department of Homeland Services
NYC Campaign Finance Board Department of Homeland Services
Community Board No. 9
NYC Campaign Finance Board
NAN House of Justice Deaf Club
National Women Political Caucus of NYC
NYC Campaign Finance Board Department of Homeland Services
AHRC Fisher Center
BMCC College
Andrew Heiskell Library
Univision in partnership with: ABC 7, Daily News, El Diario,
Hispanic Federation & League of Women Voters of NY
Initiative For Women Women With Disabilities,
NYU Langone Center
New York Career Fair
City University of New York/SPS
Brooklyn Center for Independence of the Disabled
NYC Campaign Finance Board Department of Homeland Services

Translators

Hyo Shin Presbyterian Church Voter Reg & Outreach Event
International Mother's Language Day at the Queens Museum
NYS Senator Matin J. Golden's Lunar New Year Celebration at
New Utrecht High School
NYC Public Advocate Letitia James 2016 Lunar New Year
Celebration at the Flushing Library

APAPA New York Chapter Voter Registration Drive at Taipei
Economic and Cultural Office
Asian Pacific Heritage Celeration
Mitchell-Linden Library
All Community Adult Day Care Center
All Community Adult Day Care Center
Fresh Meadows Branch Library
Asian Pacific Islander Career Day hosted by Chinese
Consolidated Benevolent Association
CTBC Bank Corp. Flushing Branch

Voter Registration Cont'd

ACTIVE REGISTRATION – 2016

Borough	Dem	Rep	Con	Gre	Wor	Ind	Wep	Ref	Oth	Blank	Total
Bronx	533,090	39,637	2,969	673	2,764	13,601	236	19	112	97,741	690,842
Kings	990,147	119,597	4,607	2,858	5,374	29,950	299	27	483	247,430	1,400,772
Manhattan	674,501	92,297	1,734	1,947	1,969	28,465	209	37	541	183,401	985,101
Queens	724,821	122,888	5,397	1,666	3,475	27,622	290	33	306	232,591	1,119,089
Staten Island	125,048	81,224	4,433	380	1,138	9,678	51	22	124	59,189	281,287
Citywide	3,047,607	455,643	19,140	7,524	14,720	109,316	1,085	138	1,566	820,352	4,477,091

1994-2015 TOTAL OF REGISTERED VOTERS IN NEW YORK CITY BY BOROUGH

Active/Inactive Voters	1994	1995	1996	1997	1998	1999	2000	2001	2002	2003	2004	2005
Manhattan	773,837	749,385	846,524	822,859	802,581	786,091	876,120	876,216	1,010,007	970,302	1,110,217	1,083,330
Brooklyn	972,206	944,409	1,066,012	1,048,316	1,024,067	998,084	1,095,963	1,109,941	1,271,743	1,220,751	1,329,900	1,297,665
Queens	790,954	757,267	849,854	851,128	840,703	830,926	902,459	927,354	1,038,926	1,012,298	1,092,384	1,059,371
Bronx	503,443	497,187	558,216	565,461	539,021	522,669	568,751	576,982	663,867	637,864	695,932	680,661
Richmond	204,339	203,564	211,742	227,210	209,486	217,978	227,355	229,938	252,560	246,689	265,988	262,249
TOTALS	3,244,779	3,151,812	3,532,348	3,514,974	3,415,858	3,355,748	3,670,648	3,720,431	4,237,103	4,087,904	4,494,421	4,383,276

Active/Inactive Voters	2006	2007	2008	2009	2010	2011	2012	2013	2014	2015	2016
Manhattan	1,099,027	1,020,216	1,137,092	1,067,602	1,083,138	1,034,163	1,109,781	1,077,586	1,049,505	1,034,443	1,126,400
Brooklyn	1,317,470	1,261,774	1,394,937	1,357,640	1,392,965	1,341,565	1,424,479	1,417,767	1,413,359	1,410,468	1,526,514
Queens	1,045,684	984,793	1,090,420	1,081,422	1,100,884	1,083,493	1,116,578	1,122,721	1,100,204	1,096,535	1,192,529
Bronx	690,491	647,824	717,957	685,848	696,246	664,369	710,436	712,273	724,576	724,625	782,405
Richmond	265,050	254,569	274,526	270,145	275,729	268,181	279,148	279,558	280,718	285,725	299,514
TOTALS	4,417,722	4,169,176	4,614,932	4,462,657	4,548,962	4,391,771	4,640,422	4,609,905	4,568,362	4,551,796	4,927,362

Election Day Operations



DEBRA LEIBLE
Coordinator, Election Day Operations

POLL WORKER RECRUITMENT AND OUTREACH

This department is charged with the responsibility for recruiting, training, assigning and tracking the performance of individuals who staff the polls and serve voters on Election Day. There are several different Poll Worker positions that vary in qualifications and degrees of responsibility:

COORDINATORS are placed in polling sites to serve as the manager, to troubleshoot any problems and ensure that Election Day procedures are being followed. Their goal is to see that voters receive courteous, prompt and proper service. Each poll site now has two tablets which the Coordinator gives to the Information Clerks during the day to assist with directing voters. At closing, the Coordinator uploads the PMDs from the scanners giving us the earliest possible results.

INFORMATION CLERKS are placed at sites with multiple EDs to help direct and guide voters to their correct voting districts and poll sites by using street directories and poll site lists. They now have tablets with an app to also assist with directing voters.

ACCESSIBILITY CLERKS are assigned to poll sites with alternate accessible entrances where doors cannot remain open or where other assistance is required. They are assigned to doors and elevators that do not have Braille and they act as warning clerks where there is a hazard of someone tripping or bumping into something on the way into the poll site.

ED/AD TABLE INSPECTORS and **POLL CLERKS** are the backbone of the Board's Election Day workforce. There are two INSPECTORS at each Election District or board, one enrolled Democrat and one Republican — a system of "checks and balances" that is required by New York State Election Law. POLL CLERKS are similarly divided and are mainly used as needed in the voting process in EDs where there are more than 750 registered voters.

SCANNER INSPECTORS verify that the scanners have not been tampered with, set-up and open the polls on the scanners for voting and assist voters if needed. There are two (2) inspectors per scanner; one (1) Democrat and one (1) Republican.

BMD INSPECTORS ensure the privacy booths and BMD are set up properly. They keep the booths clear of electioneering materials and are there to assist the voters if requested. There are two (2) Inspectors, one enrolled Democrat and one enrolled Republican.

Election Day Operations Cont'd

INTERPRETERS assist voters with limited English proficiency at poll sites in various neighborhoods in New York City and are a major component of the Board's Language Assistance Program. The Board provides Spanish, Chinese (Cantonese/Mandarin), Korean and Bengali/Hindi interpreters in targeted areas in conjunction with the plan based on recent census data.

ELECTION NIGHT REPORTING CLERKS (ENR) Every Police Precinct in New York City has a four-person bipartisan Election Night Reporting Team (ENR Team) assigned to report at 7pm. The ENR Team is responsible for the setup and testing of the Equipment prior to the close of polls.

Once the polls close, the ENR Team awaits the arrival of Police Officers transporting the Large Yellow Scanner Voting Records Bag which contains the Portable Memory Device (PMD) and the Zero Report and Results Tape. Once verified the ENR Team uses the Election Night Reporting Tablet to upload and transmit any PMDs that were not uploaded at the poll site.

A.D. POLL SITE MONITORS are a bipartisan team of specially trained Poll Workers who monitor an Assembly District on Election Day.

While the Coordinators, Inspectors, Poll Clerks and Information Clerks are required by law to be both a citizen and a registered voter, the Interpreters and Accessibility Clerks do not have such a requirement. County Committee applicants make up a great portion of the total complement needed to staff the polls but thousands of positions still must be filled. To this end, the Board trains and assigns poll workers recruited from various sources, including the City University of New York and numerous civic and advocacy groups. Poll Worker applicants also submit forms obtained from the Board's phone bank, Borough Offices, nyc.electiondayworker.com, or by indicating interest in serving when completing their Voter Registration applications.

POLL WORKER TRAINING AND INITIATIVES

During 2016, we had 402 available Adjunct Trainers and Assistants to conduct poll worker training. There were 4,078 classes at 92 training sites throughout New York City. These classes train the poll workers to use the Basic Poll Worker Manual, visual aids and various voter information forms and materials used on Election Day. Demonstrations of the AutoMARK Ballot Marking Device (BMD) and the Optical Scanner Voting System are included in the training. The Board assigned 79,097 workers to class and trained 48,818 poll workers in 2016. We continued to use step-by-step laminated instructions for the BMD and Scanners. The purpose of these cards is to make it easier for the poll workers to open and close the BMD and Scanners simply by working in teams of two – one reading the step-by-step instructions and the other performing the required steps.

The Basic Poll Worker Manual contains a section on diversity and incorporates the customer service training for the poll worker classes. The poll site signage provides voter information and assistance in all five (5) mandated languages based on what is required in each borough. These multi-language materials include "How to Use the Scanner" and the NYS Voter Bill of Rights.

NURSING HOMES PROGRAM

The Board of Elections provides special services to Nursing Care Residential Facilities and their occupants. During the 2016 Presidential Primary, Special Election, Federal Primary, State and Local Primary and Presidential Election, Board staff made 453 visits to nursing home facilities and delivered 19,444 Absentee Ballots to residents.

EDO DEPARTMENT

EDO Department staff assists with educating voters on the BMD, Scanner and Election Procedures. They organize demonstrations of equipment when requested throughout the five boroughs as well as attend recruitment events for poll workers. In 2016, there were 37,492 poll workers recruited through various events and organizations.

Election Day Operations Cont'd

2016 POLL WORKER COVERAGE ANALYSIS

Poll Worker Positions	Special Election 17th Council - 02/23/2016			Pres Primary Election 2016 - 04/19/2016			Federal Primary - 06/28/2016			Primary Election 2016 - 09/13/2016			General Election 2016 - 11/08/2016		
	P	A	W	P	A	W	P	A	W	P	A	W	P	A	W
*															
Accessibility Clerk	35	35	31	1,397	1,390	1,083	764	743	583	1,230	1,217	1,026	1,606	1,575	1,485
AD Poll Site Monitor	6	6	7	396	359	349	314	216	215	306	290	295	380	391	379
Bengali Interpreter	0	0	0	82	78	61	46	44	44	50	48	43	74	74	70
Chinese Interpreter	0	0	0	1,084	979	717	632	593	443	943	830	713	1,149	1,069	971
Coordinator	72	72	70	1,648	1,546	1,528	917	913	899	1,331	1,293	1,284	1,742	1,710	1,695
Custodian	3	2	2	182	111	123	106	69	69	143	85	87	172	111	133
Election Night Reporting Clerk	16	16	14	316	300	278	252	228	216	312	288	277	316	315	307
Field/Office/Zone Coordinator	10	0	0	10	6	3	10	10	3	10	6	6	10	3	4
Hindi Interpreter	0	0	0	100	97	72	40	40	33	66	65	53	92	90	80
Information Clerk	13	13	9	1,111	980	779	611	593	438	830	822	747	1,771	1,735	1,619
Inspector - Relief	0	0	0	2,506	2,265	924	1,526	1,424	509	2,108	2,035	1,007	1,790	1,746	1,105
Inspector - Student (Full)	0	0	0	39	36	35	25	25	16	69	62	44	156	144	121
Inspector - Student (Peak)	0	0	0	0	0	0	0	0	0	0	0	0	17	14	12
Inspector BMD-Privacy Booth	0	0	0	1,746	1,580	736	922	862	340	1,338	1,298	683	1,674	1,619	1,104
Inspector Table	112	112	111	10,240	9,591	10,091	5,528	5,370	5,547	7,996	7,904	8,532	10,386	10,202	11,643
Inspector-Scanner	112	111	89	5,986	5,578	4,132	3,076	2,958	2,213	4,548	4,456	3,974	6,930	6,751	6,766
Korean Interpreter	0	0	0	203	164	119	44	44	35	137	112	96	204	188	171
Peak Coverage Worker	0	0	0	5	4	4	0	0	0	128	80	43	83	68	47
Poll Clerk - Relief	76	76	73	1,676	1,511	703	798	759	390	1,294	1,258	780	5,975	5,555	3,695
Poll Clerk BMD	72	72	61	644	544	316	390	349	179	692	653	468	740	715	535
Poll Clerk Relief -S	0	0	0	2,236	1,282	623	200	63	33	0	0	0	460	438	267
Poll Clerk Scanner	54	52	33	258	222	157	138	120	83	296	280	219	262	251	192
Spanish Interpreter	34	33	25	1,033	1,017	772	626	614	457	881	858	733	1,141	1,102	1,037

* P = POSITIONS
 * A = ASSIGNED
 * W = WORKED

Election Day Operations Cont'd

1ST TIME POLL WORKERS IN 2016 — Special Election 17th Council - 02/23/2016

County	Worked	First Timers	% of Total
BX	525	2	0.38

1ST TIME POLL WORKERS IN 2016 — Pres Primary Election 2016 - 04/19/2016

County	Worked	First Timers	% of Total
NY	4,779	526	11.01
BX	3,874	374	9.65
KG	7,569	835	11.03
QN	6,004	414	6.89
RH	1,455	157	10.79

1ST TIME POLL WORKERS IN 2016 — Federal Primary - 06/28/2016

County	Worked	First Timers	% of Total
NY	4,473	246	5.50
BX	2,412	17	0.7
KG	2,733	22	0.8
QN	3,393	60	1.77

1ST TIME POLL WORKERS IN 2016 — Primary Election - 09/13/2016

County	Worked	First Timers	% of Total
NY	4,538	778	17.14
BX	3,826	753	19.68
KG	7,898	1,713	21.69
QN	3,916	900	22.98
RH	1,323	237	17.91

1ST TIME POLL WORKERS IN 2016 — General Election - 11/08/2016

County	Worked	First Timers	% of Total
NY	6,898	1,486	21.54
BX	6,185	1,670	27
KG	10,658	2,330	21.86
QN	7,827	1,605	20.51
RH	2,066	528	25.56

Election Day Operations Cont'd

2016 BOE / COUNTY POLL WORKERS — Special Election 17th Council - 02/23/2016

County	Appointed by	Workers
BX	County	454
BX	BoE	71

2016 BOE / COUNTY POLL WORKERS — Pres Primary Election 2016 - 04/19/2016

County	Appointed by	Workers
NY	County	1,414
NY	BoE	3,365
BX	County	1,490
BX	BoE	2,384
KG	County	3,063
KG	BoE	4,506
QN	County	1,980
QN	BoE	4,024
RH	County	286
RH	BoE	1,169

2016 BOE / COUNTY POLL WORKERS — Federal Primary - 06/28/2016

County	Appointed by	Workers
NY	County	1,303
NY	BoE	3,170
BX	County	1,094
BX	BoE	1,318
KG	County	1,289
KG	BoE	1,444
QN	County	1,135
QN	BoE	2,258

2016 BOE / COUNTY POLL WORKERS — Primary Election - 09/13/2016

County	Appointed by	Workers
NY	County	1,151
NY	BoE	3,387
BX	County	1,389
BX	BoE	2,437
KG	County	2,876
KG	BoE	5,022
QN	County	1,351
QN	BoE	2,565
RH	County	252
RH	BoE	1,071

2016 BOE / COUNTY POLL WORKERS — General Election - 11/08/2016

County	Appointed by	Workers
NY	County	1,455
NY	BoE	5,443
BX	County	1,640
BX	BoE	4,545
KG	County	3,271
KG	BoE	7,387
QN	County	2,094
QN	BoE	5,733
RH	County	274
RH	BoE	1,792

Election Day Operations Cont'd

OF INTERPRETERS, LOCATIONS & COST PER ELECTION

		Special Election 17th Council - 02/23/2016	Pres Primary Election 2016 - 04/19/2016	Federal Primary - 06/28/2016	Primary Election 2016 - 09/13/2016	General Election 2016 - 11/08/2016
New York	# OF LOCATIONS	N/A	189	196	177	226
	# OF INTERPRETERS	N/A	327	357	371	529
	COST	N/A	\$65,400.00	\$71,400.00	\$74,200.00	\$105,800.00
Bronx	# OF LOCATIONS	25	119	80	120	158
	# OF INTERPRETERS	25	125	80	128	176
	COST	\$5,000.00	\$25,000.00	\$16,000.00	\$25,600.00	\$35,200.00
Brooklyn	# OF LOCATIONS	N/A	295	125	311	331
	# OF INTERPRETERS	N/A	520	248	564	670
	COST	N/A	\$104,000.00	\$49,600.00	\$112,800.00	\$134,000.00
Queens	# OF LOCATIONS	N/A	224	119	137	241
	# OF INTERPRETERS	N/A	739	327	530	910
	COST	N/A	\$147,800.00	\$65,400.00	\$106,000.00	\$182,000.00
Staten Island	# OF LOCATIONS	N/A	30	N/A	45	44
	# OF INTERPRETERS	N/A	30	N/A	45	44
	COST	N/A	\$6,000.00	N/A	\$9,000.00	\$8,800.00

Election Day Operations Cont'd

2016 POLL WORKER INSPECTOR VACANCY

Election	Inspector Vacancy	Positions	% Vacant
Special Election 17th Council - 02/23/2016			
Bronx	67	426	15.73%
Presidential Primary Election 2016 - 04/19/2016			
Manhattan	1,601	5,076	31.54%
Bronx	1,110	3,952	28.09%
Brooklyn	1,913	7,394	25.87%
Queens	1,212	5,296	22.89%
Staten Island	188	1,338	14.05%
Federal Primary - 06/28/2016			
Manhattan	1,793	4,996	35.89%
Bronx	583	2,388	24.41%
Brooklyn	511	2,410	21.20%
Queens	269	2,584	10.41%
Primary Election 2016 - 09/13/2016			
Manhattan	567	3,860	14.69%
Bronx	374	3,344	11.18%
Brooklyn	1,536	7,330	20.95%
Queens	211	2,724	7.75%
Staten Island	67	1,014	6.61%
General Election 2016 - 11/08/2016			
Manhattan	479	5,324	9.00%
Bronx	862	5,854	14.72%
Brooklyn	876	8,593	10.19%
Queens	644	6,248	10.31%
Staten Island	268	1,738	15.42%

Election Day Operations Cont'd

2016 POLL WORKER TEST PASSING RATE — Special Election 17th Council - 02/23/2016

County	Worked	Passed	% Passed
BX	523	523	100

2016 POLL WORKER TEST PASSING RATE — Pres Primary Election 2016 - 04/19/2016

County	Worked	Passed	% Passed
NY	4,740	4,740	100
BX	3,844	3,843	100
KG	7,534	7,531	100
QN	5,979	5,979	100
RH	1,442	1,442	100

2016 POLL WORKER TEST PASSING RATE — Federal Primary - 06/28/2016

County	Worked	Passed	% Passed
NY	4,426	4,425	100
BX	2,401	2,401	100
KG	2,721	2,721	100
QN	3,382	3,382	100

2016 POLL WORKER COMPLAINTS BY CATEGORY

Borough	Complaints That Poll Workers Were Rude/Behavior Issues*	Complaints That Poll Workers Were Not Following Proper Procedures*
Manhattan	155	108
Bronx	47	37
Brooklyn	81	112
Queens	59	53
Staten Island	52	17
Total	394	327

* All poll workers with complaints regarding behavioral issues were called in and some were dismissed

* All poll workers with complaints regarding not following proper procedures were brought in for additional training

2016 POLL WORKER TEST PASSING RATE — Primary Election 2016 - 09/13/2016

County	Worked	Passed	% Passed
NY	4,502	4,502	100
BX	3,815	3,814	100
KG	7,860	7,860	100
QN	3,905	3,903	100
RH	1,313	1,312	100

2016 POLL WORKER TEST PASSING RATE — General Election 2016 - 11/08/2016

County	Worked	Passed	% Passed
NY	6,852	6,852	100
BX	6,162	6,161	100
KG	10,661	10,610	100
QN	7,792	7,792	100
RH	2,053	2,052	100

Election Day Operations Cont'd

2016 STANDBY USAGE — Special Election 17th Council - 02/23/2016

County	Standby Pool	Poll Workers Used From Standby Pool	% Of Standby Pool Used
BX	52	52	100

2016 STANDBY USAGE — Presidential Primary Election 2016 - 04/19/2016

County	Standby Pool	Poll Workers Used From Standby Pool	% Of Standby Pool Used
NY	184	124	67.39
BX	99	99	100
KG	118	111	94.07
QN	207	204	98.55
RH	56	53	94.64

2016 STANDBY USAGE — Federal Primary - 06/28/2016

County	Standby Pool	Poll Workers Used From Standby Pool	% Of Standby Pool Used
NY	229	168	73.36
BX	98	98	100
KG	110	103	93.64
QN	302	109	36.09

2016 STANDBY USAGE — Primary Election 2016 - 09/13/2016

County	Standby Pool	Poll Workers Used From Standby Pool	% Of Standby Pool Used
NY	391	284	72.63
BX	202	201	99.5
KG	268	246	91.79
QN	355	170	47.89
RH	90	22	24.44

2016 STANDBY USAGE — General Election 2016 - 11/08/2016

County	Standby Pool	Poll Workers Used From Standby Pool	% Of Standby Pool Used
NY	634	537	84.70
BX	538	537	99.81
KG	476	467	98.11
QN	359	305	84.96
RH	109	85	77.98

Election Day Operations Cont'd

2015 POLL WORKER APPLICATIONS RECEIVED

Poll Worker Application Source	County	Apps	Tested	%
2014DirectMail	BX	0	0	0.00%
2014DirectMail	KG	0	0	0.00%
2014DirectMail	NY	4	1	25.00%
2014DirectMail	QN	0	0	0.00%
2014DirectMail	RH	0	0	0.00%
2016	BX	0	0	0.00%
2016	KG	1	0	0.00%
2016	NY	10	7	70.00%
2016	QN	0	0	0.00%
2016	RH	0	0	0.00%
AALDEF	BX	0	0	0.00%
AALDEF	KG	4	3	75.00%
AALDEF	NY	0	0	0.00%
AALDEF	QN	0	0	0.00%
AALDEF	RH	0	0	0.00%
B-EDO	BX	5	2	40.00%
B-EDO	KG	1,374	587	42.72%
B-EDO	NY	7	6	85.71%
B-EDO	QN	3	2	66.67%
B-EDO	RH	1	1	100.00%
BX BOE	BX	1,927	1,019	52.88%
BX BOE	KG	2	1	50.00%
BX BOE	NY	5	1	20.00%
BX BOE	QN	0	0	0.00%
BX BOE	RH	0	0	0.00%
CAVA	BX	1	1	100.00%
CAVA	KG	0	0	0.00%
CAVA	NY	0	0	0.00%
CAVA	QN	0	0	0.00%
CAVA	RH	0	0	0.00%
Community Organization	BX	26	12	46.15%
Community Organization	KG	21	14	66.67%
Community Organization	NY	49	30	61.22%
Community Organization	QN	18	6	33.33%
Community Organization	RH	0	0	0.00%
Community-Mail	BX	416	198	47.60%
Community-Mail	KG	110	40	36.36%
Community-Mail	NY	434	239	55.07%
Community-Mail	QN	336	72	21.43%
Community-Mail	RH	44	22	50.00%
County Organization	BX	271	211	77.86%
County Organization	KG	402	288	71.64%
County Organization	NY	147	114	77.55%
County Organization	QN	120	79	65.83%
County Organization	RH	6	3	50.00%
CUNY	BX	0	0	0.00%
CUNY	KG	2	1	50.00%
CUNY	NY	0	0	0.00%
CUNY	QN	0	0	0.00%
CUNY	RH	0	0	0.00%
CUNY Student	BX	0	0	0.00%
CUNY Student	KG	4	2	50.00%
CUNY Student	NY	0	0	0.00%
CUNY Student	QN	1	1	100.00%
CUNY Student	RH	1	1	100.00%
Deputized	BX	0	0	0.00%

Poll Worker Application Source	County	Apps	Tested	%
Deputized	KG	22	10	45.45%
Deputized	NY	2	2	100.00%
Deputized	QN	0	0	0.00%
Deputized	RH	0	0	0.00%
Direct Mailing	BX	7	3	42.86%
Direct Mailing	KG	32	13	40.63%
Direct Mailing	NY	781	475	60.82%
Direct Mailing	QN	1,125	555	49.33%
Direct Mailing	RH	0	0	0.00%
EDOTransDepartment	BX	0	0	0.00%
EDOTransDepartment	KG	0	0	0.00%
EDOTransDepartment	NY	1	0	0.00%
EDOTransDepartment	QN	4	4	100.00%
EDOTransDepartment	RH	0	0	0.00%
ElectionDayWorker.com	BX	906	310	34.22%
ElectionDayWorker.com	KG	2,696	1,180	43.77%
ElectionDayWorker.com	NY	1,346	714	53.05%
ElectionDayWorker.com	QN	1,791	806	45.00%
ElectionDayWorker.com	RH	306	196	64.05%
ElectionDayWorker.com via 2016	BX	769	165	21.46%
ElectionDayWorker.com via 2016	KG	2,558	984	38.47%
ElectionDayWorker.com via 2016	NY	1,252	591	47.20%
ElectionDayWorker.com via 2016	QN	902	283	31.37%
ElectionDayWorker.com via 2016	RH	215	157	73.02%
ElectionDayWorker.com via AALDEF	BX	0	0	0.00%
ElectionDayWorker.com via AALDEF	KG	2	2	100.00%
ElectionDayWorker.com via AALDEF	NY	0	0	0.00%
ElectionDayWorker.com via AALDEF	QN	0	0	0.00%
ElectionDayWorker.com via AALDEF	RH	0	0	0.00%
ElectionDayWorker.com via B-EDO	BX	0	0	0.00%
ElectionDayWorker.com via B-EDO	KG	255	99	38.82%
ElectionDayWorker.com via B-EDO	NY	0	0	0.00%
ElectionDayWorker.com via B-EDO	QN	1	1	100.00%
ElectionDayWorker.com via B-EDO	RH	0	0	0.00%
ElectionDayWorker.com via BX BOE	BX	72	49	68.06%
ElectionDayWorker.com via BX BOE	KG	0	0	0.00%
ElectionDayWorker.com via BX BOE	NY	1	0	0.00%
ElectionDayWorker.com via BX BOE	QN	0	0	0.00%
ElectionDayWorker.com via BX BOE	RH	0	0	0.00%
ElectionDayWorker.com via Community Organization	BX	1	1	100.00%
ElectionDayWorker.com via Community Organization	KG	2	2	100.00%
ElectionDayWorker.com via Community Organization	NY	0	0	0.00%
ElectionDayWorker.com via Community Organization	QN	0	0	0.00%
ElectionDayWorker.com via Community Organization	RH	0	0	0.00%
ElectionDayWorker.com via Community-Mail	BX	17	13	76.47%
ElectionDayWorker.com via Community-Mail	KG	9	6	66.67%
ElectionDayWorker.com via Community-Mail	NY	16	14	87.50%
ElectionDayWorker.com via Community-Mail	QN	5	5	100.00%
ElectionDayWorker.com via Community-Mail	RH	4	4	100.00%
ElectionDayWorker.com via County Organization	BX	21	20	95.24%
ElectionDayWorker.com via County Organization	KG	58	56	96.55%
ElectionDayWorker.com via County Organization	NY	17	17	100.00%
ElectionDayWorker.com via County Organization	QN	7	6	85.71%
ElectionDayWorker.com via County Organization	RH	3	3	100.00%
ElectionDayWorker.com via CUNY	BX	47	10	21.28%
ElectionDayWorker.com via CUNY	KG	82	40	48.78%

Election Day Operations Cont'd

2015 POLL WORKER APPLICATIONS RECEIVED CONT'D

Poll Worker Application Source	County	Apps	Tested	%
ElectionDayWorker.com via CUNY	NY	45	22	48.89%
ElectionDayWorker.com via CUNY	QN	114	54	47.37%
ElectionDayWorker.com via CUNY	RH	13	8	61.54%
ElectionDayWorker.com via CUNY Student	BX	272	70	25.74%
ElectionDayWorker.com via CUNY Student	KG	641	255	39.78%
ElectionDayWorker.com via CUNY Student	NY	248	89	35.89%
ElectionDayWorker.com via CUNY Student	QN	331	113	34.14%
ElectionDayWorker.com via CUNY Student	RH	59	39	66.10%
ElectionDayWorker.com via Department of Education	BX	1	0	0.00%
ElectionDayWorker.com via Department of Education	KG	10	1	10.00%
ElectionDayWorker.com via Department of Education	NY	1	0	0.00%
ElectionDayWorker.com via Department of Education	QN	0	0	0.00%
ElectionDayWorker.com via Department of Education	RH	0	0	0.00%
ElectionDayWorker.com via Direct Mailing	BX	1	0	0.00%
ElectionDayWorker.com via Direct Mailing	KG	2	2	100.00%
ElectionDayWorker.com via Direct Mailing	NY	49	39	79.59%
ElectionDayWorker.com via Direct Mailing	QN	41	32	78.05%
ElectionDayWorker.com via Direct Mailing	RH	0	0	0.00%
ElectionDayWorker.com via Event Recruitment Drive (ERD)	BX	1	1	100.00%
ElectionDayWorker.com via Event Recruitment Drive (ERD)	KG	0	0	0.00%
ElectionDayWorker.com via Event Recruitment Drive (ERD)	NY	0	0	0.00%
ElectionDayWorker.com via Event Recruitment Drive (ERD)	QN	0	0	0.00%
ElectionDayWorker.com via Event Recruitment Drive (ERD)	RH	0	0	0.00%
ElectionDayWorker.com via Facebook Ad	BX	56	21	37.50%
ElectionDayWorker.com via Facebook Ad	KG	117	50	42.74%
ElectionDayWorker.com via Facebook Ad	NY	81	49	60.49%
ElectionDayWorker.com via Facebook Ad	QN	114	61	53.51%
ElectionDayWorker.com via Facebook Ad	RH	83	48	57.83%
ElectionDayWorker.com via Google Ad	BX	0	0	0.00%
ElectionDayWorker.com via Google Ad	KG	1	0	0.00%
ElectionDayWorker.com via Google Ad	NY	0	0	0.00%
ElectionDayWorker.com via Google Ad	QN	0	0	0.00%
ElectionDayWorker.com via Google Ad	RH	0	0	0.00%
ElectionDayWorker.com via Interpreter Print Ad	BX	0	0	0.00%
ElectionDayWorker.com via Interpreter Print Ad	KG	0	0	0.00%
ElectionDayWorker.com via Interpreter Print Ad	NY	0	0	0.00%
ElectionDayWorker.com via Interpreter Print Ad	QN	2	2	100.00%
ElectionDayWorker.com via Interpreter Print Ad	RH	0	0	0.00%
ElectionDayWorker.com via KAVC	BX	0	0	0.00%
ElectionDayWorker.com via KAVC	KG	1	0	0.00%
ElectionDayWorker.com via KAVC	NY	0	0	0.00%
ElectionDayWorker.com via KAVC	QN	0	0	0.00%
ElectionDayWorker.com via KAVC	RH	0	0	0.00%
ElectionDayWorker.com via KG BOE	BX	0	0	0.00%
ElectionDayWorker.com via KG BOE	KG	139	81	58.27%
ElectionDayWorker.com via KG BOE	NY	0	0	0.00%
ElectionDayWorker.com via KG BOE	QN	0	0	0.00%
ElectionDayWorker.com via KG BOE	RH	0	0	0.00%
ElectionDayWorker.com via League of Women Voters	BX	0	0	0.00%
ElectionDayWorker.com via League of Women Voters	KG	1	0	0.00%
ElectionDayWorker.com via League of Women Voters	NY	2	2	100.00%
ElectionDayWorker.com via League of Women Voters	QN	0	0	0.00%
ElectionDayWorker.com via League of Women Voters	RH	0	0	0.00%
ElectionDayWorker.com via Newspaper Ad	BX	16	4	25.00%
ElectionDayWorker.com via Newspaper Ad	KG	40	16	40.00%
ElectionDayWorker.com via Newspaper Ad	NY	17	8	47.06%

Poll Worker Application Source	County	Apps	Tested	%
ElectionDayWorker.com via Newspaper Ad	QN	124	79	63.71%
ElectionDayWorker.com via Newspaper Ad	RH	1	1	100.00%
ElectionDayWorker.com via NY BOE	BX	0	0	0.00%
ElectionDayWorker.com via NY BOE	KG	4	3	75.00%
ElectionDayWorker.com via NY BOE	NY	34	27	79.41%
ElectionDayWorker.com via NY BOE	QN	1	1	100.00%
ElectionDayWorker.com via NY BOE	RH	0	0	0.00%
ElectionDayWorker.com via NYC.gov	BX	37	9	24.32%
ElectionDayWorker.com via NYC.gov	KG	59	23	38.98%
ElectionDayWorker.com via NYC.gov	NY	29	12	41.38%
ElectionDayWorker.com via NYC.gov	QN	32	12	37.50%
ElectionDayWorker.com via NYC.gov	RH	6	5	83.33%
ElectionDayWorker.com via Other	BX	1	1	100.00%
ElectionDayWorker.com via Other	KG	27	24	88.89%
ElectionDayWorker.com via Other	NY	0	0	0.00%
ElectionDayWorker.com via Other	QN	3	2	66.67%
ElectionDayWorker.com via Other	RH	0	0	0.00%
ElectionDayWorker.com via Phone Bank	BX	0	0	0.00%
ElectionDayWorker.com via Phone Bank	KG	1	1	100.00%
ElectionDayWorker.com via Phone Bank	NY	4	3	75.00%
ElectionDayWorker.com via Phone Bank	QN	4	4	100.00%
ElectionDayWorker.com via Phone Bank	RH	0	0	0.00%
ElectionDayWorker.com via Registration	BX	0	0	0.00%
ElectionDayWorker.com via Registration	KG	5	3	60.00%
ElectionDayWorker.com via Registration	NY	0	0	0.00%
ElectionDayWorker.com via Registration	QN	1	1	100.00%
ElectionDayWorker.com via Registration	RH	0	0	0.00%
ElectionDayWorker.com via RH BOE	BX	0	0	0.00%
ElectionDayWorker.com via RH BOE	KG	0	0	0.00%
ElectionDayWorker.com via RH BOE	NY	0	0	0.00%
ElectionDayWorker.com via RH BOE	QN	0	0	0.00%
ElectionDayWorker.com via RH BOE	RH	30	27	90.00%
ElectionDayWorker.com via SAFEST	BX	0	0	0.00%
ElectionDayWorker.com via SAFEST	KG	0	0	0.00%
ElectionDayWorker.com via SAFEST	NY	0	0	0.00%
ElectionDayWorker.com via SAFEST	QN	2	2	100.00%
ElectionDayWorker.com via SAFEST	RH	0	0	0.00%
ElectionDayWorker.com via Section 203	BX	0	0	0.00%
ElectionDayWorker.com via Section 203	KG	14	10	71.43%
ElectionDayWorker.com via Section 203	NY	5	4	80.00%
ElectionDayWorker.com via Section 203	QN	27	16	59.26%
ElectionDayWorker.com via Section 203	RH	0	0	0.00%
ElectionDayWorker.com via SIPW	BX	0	0	0.00%
ElectionDayWorker.com via SIPW	KG	0	0	0.00%
ElectionDayWorker.com via SIPW	NY	0	0	0.00%
ElectionDayWorker.com via SIPW	QN	0	0	0.00%
ElectionDayWorker.com via SIPW	RH	8	7	87.50%
ElectionDayWorker.com via SPW16	BX	0	0	0.00%
ElectionDayWorker.com via SPW16	KG	0	0	0.00%
ElectionDayWorker.com via SPW16	NY	0	0	0.00%
ElectionDayWorker.com via SPW16	QN	0	0	0.00%
ElectionDayWorker.com via SPW16	RH	2	2	100.00%
ElectionDayWorker.com via State Board of Elections	BX	2	2	100.00%
ElectionDayWorker.com via State Board of Elections	KG	5	3	60.00%
ElectionDayWorker.com via State Board of Elections	NY	3	1	33.33%
ElectionDayWorker.com via State Board of Elections	QN	7	5	71.43%

Election Day Operations Cont'd

2015 POLL WORKER APPLICATIONS RECEIVED CONT'D

Poll Worker Application Source	County	Apps	Tested	%
ElectionDayWorker.com via State Board of Elections	RH	0	0	0.00%
ElectionDayWorker.com via Veteran	BX	1	1	100.00%
ElectionDayWorker.com via Veteran	KG	0	0	0.00%
ElectionDayWorker.com via Veteran	NY	1	1	100.00%
ElectionDayWorker.com via Veteran	QN	0	0	0.00%
ElectionDayWorker.com via Veteran	RH	0	0	0.00%
ElectionDayWorker.com via Voter Information Notice	BX	47	7	14.89%
ElectionDayWorker.com via Voter Information Notice	KG	109	64	58.72%
ElectionDayWorker.com via Voter Information Notice	NY	71	46	64.79%
ElectionDayWorker.com via Voter Information Notice	QN	60	22	36.67%
ElectionDayWorker.com via Voter Information Notice	RH	36	27	75.00%
ElectionDayWorker.com via Web Site	BX	1,626	555	34.13%
ElectionDayWorker.com via Web Site	KG	4,349	1,901	43.71%
ElectionDayWorker.com via Web Site	NY	2,150	1,162	54.05%
ElectionDayWorker.com via Web Site	QN	1,985	771	38.84%
ElectionDayWorker.com via Web Site	RH	370	230	62.16%
ElectionDayWorker.com via whosontheballot.org	BX	1	1	100.00%
ElectionDayWorker.com via whosontheballot.org	KG	0	0	0.00%
ElectionDayWorker.com via whosontheballot.org	NY	0	0	0.00%
ElectionDayWorker.com via whosontheballot.org	QN	0	0	0.00%
ElectionDayWorker.com via whosontheballot.org	RH	0	0	0.00%
Event Recruitment Drive (ERD)	BX	28	10	35.71%
Event Recruitment Drive (ERD)	KG	1	1	100.00%
Event Recruitment Drive (ERD)	NY	4	2	50.00%
Event Recruitment Drive (ERD)	QN	13	1	7.69%
Event Recruitment Drive (ERD)	RH	14	11	78.57%
HPWA	BX	0	0	0.00%
HPWA	KG	3	2	66.67%
HPWA	NY	0	0	0.00%
HPWA	QN	0	0	0.00%
HPWA	RH	0	0	0.00%
HPWA-CUNY	BX	0	0	0.00%
HPWA-CUNY	KG	1	0	0.00%
HPWA-CUNY	NY	0	0	0.00%
HPWA-CUNY	QN	4	4	100.00%
HPWA-CUNY	RH	0	0	0.00%
KG BOE	BX	1	1	100.00%
KG BOE	KG	647	375	57.96%
KG BOE	NY	2	2	100.00%
KG BOE	QN	4	2	50.00%
KG BOE	RH	0	0	0.00%
Newspaper Ad	BX	0	0	0.00%
Newspaper Ad	KG	0	0	0.00%
Newspaper Ad	NY	1	1	100.00%
Newspaper Ad	QN	0	0	0.00%
Newspaper Ad	RH	0	0	0.00%
NY BOE	BX	0	0	0.00%
NY BOE	KG	11	9	81.82%
NY BOE	NY	552	318	57.61%
NY BOE	QN	4	3	75.00%
NY BOE	RH	0	0	0.00%
NYC.gov	BX	0	0	0.00%
NYC.gov	KG	0	0	0.00%
NYC.gov	NY	2	1	50.00%
NYC.gov	QN	0	0	0.00%
NYC.gov	RH	0	0	0.00%

Poll Worker Application Source	County	Apps	Tested	%
Other	BX	10	1	10.00%
Other	KG	325	175	53.85%
Other	NY	34	23	67.65%
Other	QN	90	71	78.89%
Other	RH	0	0	0.00%
Phone Bank	BX	53	17	32.08%
Phone Bank	KG	68	7	10.29%
Phone Bank	NY	48	27	56.25%
Phone Bank	QN	157	91	57.96%
Phone Bank	RH	21	14	66.67%
QN BOE	BX	0	0	0.00%
QN BOE	KG	0	0	0.00%
QN BOE	NY	0	0	0.00%
QN BOE	QN	2	0	0.00%
QN BOE	RH	0	0	0.00%
Registration	BX	4	2	50.00%
Registration	KG	44	21	47.73%
Registration	NY	0	0	0.00%
Registration	QN	0	0	0.00%
Registration	RH	10	8	80.00%
RH BOE	BX	0	0	0.00%
RH BOE	KG	0	0	0.00%
RH BOE	NY	0	0	0.00%
RH BOE	QN	0	0	0.00%
RH BOE	RH	303	205	67.66%
SAFEST	BX	12	8	66.67%
SAFEST	KG	0	0	0.00%
SAFEST	NY	0	0	0.00%
SAFEST	QN	39	5	12.82%
SAFEST	RH	0	0	0.00%
Safest Org	BX	1	1	100.00%
Safest Org	KG	0	0	0.00%
Safest Org	NY	0	0	0.00%
Safest Org	QN	0	0	0.00%
Safest Org	RH	0	0	0.00%
Section 203	BX	0	0	0.00%
Section 203	KG	1	0	0.00%
Section 203	NY	0	0	0.00%
Section 203	QN	0	0	0.00%
Section 203	RH	0	0	0.00%
SPW16	BX	0	0	0.00%
SPW16	KG	0	0	0.00%
SPW16	NY	0	0	0.00%
SPW16	QN	1	1	100.00%
SPW16	RH	62	58	93.55%
Web Site	BX	4	2	50.00%
Web Site	KG	9	0	0.00%
Web Site	NY	5	2	40.00%
Web Site	QN	26	7	26.92%
Web Site	RH	0	0	0.00%
whosontheballot.org	BX	0	0	0.00%
whosontheballot.org	KG	0	0	0.00%
whosontheballot.org	NY	1	1	100.00%
whosontheballot.org	QN	0	0	0.00%
whosontheballot.org	RH	0	0	0.00%

Voting Equipment Operations Unit/Poll Site Management



JOHN P. O'GRADY
Chief Voting Machine Technician

VOTING MACHINE FACILITIES

The Voting Machine Facilities (VMF) staff in all boroughs has continued to enhance the efficiency of the preparation of Scanners and BMDs equipment for an Election. The average time to test and prepare the Scanners and BMDs is averaging between 50 to 60 minutes per device.

Voting Equipment Operations Unit/Poll Site Management Cont'd

The VMF prepared and deployed all the equipment required for the 2016 Special Election, Presidential Primary, Federal Primary Election, State Primary and Presidential General Election as follows:

Election	DS 200 Scanners	Ballot Marking Device	ED Transportation Carts	Privacy Booths
February 23, 2016, Special Election	83	36	56	341
April 19, 2016, Presidential Primary Election	3,122	1,237	5,120	13,884
June 28, 2016, Federal Primary Election	1,644	701	3,104	6,746
September 13, 2016, State Primary Election	2,545	1,053	4,168	9,774
November 8, 2016, Presidential Election	3,595	1,254	5,188	16,476

During 2016, the VMF staff with the assistance of ES&S were able to address equipment problems on Election Day within an average of 31 to 49 minutes. The Board of Elections received calls and replaced on Election Day the following Scanners and Ballot Marking Devices:

Election	DS 200 Scanners			Ballot Marking Devices		
	Calls	Replaced		Calls	Replaced	
		Number	Percentage		Number	Percentage
February 23, 2016, Special Election	7	0	0%	1	0	0%
April 19, 2016, Presidential Primary Election	686	17	.54%	193	15	1.21%
June 28, 2016, Federal Primary Election	183	2	.12%	52	1	.14%
September 13, 2016, State Primary Election	343	6	.24%	137	7	.66%
November 8, 2016, Presidential Election	1,878	31	.86%	310	18	1.44%

Note: Every poll site received at least one BMD.

In addition, the Board of Elections received and documented the following Election Day Calls:

Election	Poll Site	Poll Workers	Supplies	Procedure Question	ED Supply Carts	Accessibility Issues	Other
February 23, 2016, Special Election	10	35	18	0	0	31	16
April 19, 2016, Presidential Primary Election	339	1,339	497	147	69	142	1,505
June 28, 2016, Federal Primary Election	273	681	239	36	24	129	523
September 13, 2016, State Primary Election	248	874	306	24	33	131	988
November 8, 2016, Presidential Election	386	1,419	955	159	71	135	3,845
Total Election Day Calls for the Year	1,256	4,348	2,015	366	197	568	6,877

Voting Equipment Operations Unit/Poll Site Management Cont'd

Poll sites that began processing voters after 6:00 am on Election Day:

Election	Poll Site	Open on Time		Open Late	
		Number	Percentage	Number	Percentage
February 23, 2016, Special Election	36	36	100%	0	0%
April 19, 2016, Presidential Primary Election	1,194	1,185	99.25%	9	.75%
June 28, 2016, Federal Primary Election	677	668	98.67%	9	1.33%
September 13, 2016, State Primary Election	1,015	1,012	99.70%	3	.30%
November 8, 2016, Presidential Election	1,205	1,192	98.92%	13	1.08%

The General Office VEOU throughout the year continued to provide all the reports, supplies and technical support required by the Voting Machine Facility staff in all five boroughs.

POLL SITES

In 2016, the Board of Elections VEOU-Poll Site Division accomplishments were:

- Increasing efforts of making polling sites, paths of travel, entrances, exits, and voting areas accessible to individuals with disabilities.
- Ensuring that each polling site contained appropriate square footage, visible accessible entrances, technology friendly and reliable, and contained a survey that includes: schematics for accessing polling sites and floor plans that detailed the placement of the Election Day equipment.

Federal Court Order Implementation Continuation:

In compliance with the requirements of the United Spinal Association Federal Court Order, 420 additional final surveys were received prior to the completion of the election cycle. VEOU reviewed 354 final surveys with accessibility barriers submitted by Evan Terry Associates, the court appointed expert. As a result of the reviews, solutions to overcome barriers at poll sites were implemented. The solutions included but were not limited to; the placement of additional accessibility clerks and the installation of door props, cones, ramps and mats in polling sites.

BOE-VEOU reviewed and updated its accessibility procedures where necessary in order to comply with the requirements of the court order. An area of enhancement to the procedures was with the poll site floor plans and schematics. The schematics and floor plans will clearly identify by letters all accessible entrances and pathways leading into and out of the polling room. This will allow for deployment of accessibility clerks and/or equipment where needed to resolve any barriers within the poll site. Furthermore, the Board has modified and continues to enhance its Facility Management System to improve the tracking of the solutions to barriers.

In accordance with the requirements of the court order, BOE surveyors attended a three (3) day training program conducted by Evan Terry Associates about how to conduct poll site surveys. The training program consisted of one (1) days of classroom training and two (2) days of hands-on field surveying accompanied by an Evan Terry Associates staff person as the lead surveyor.

In addition, the Board has implemented a pilot project testing a new tracking system for equipment deployment using RFID tags in Bronx and Staten Island. The new tracking system allows the Board to confirm in real-time when equipment has been delivered to poll sites. The Board plans on full implementation in 2016.

Facilities Operations



NICHOLAS SQUICCIARINI
Facilities Manager

In 2016, the new Queens office at 118-35 Queens Boulevard is completely occupied serving the voters of Queens County.

At 32/42 Broadway, the Board's General office renovations are continuing with new restrooms in 32 Broadway, new ADA reception counters in 32 and 42 Broadway, new executive pantry, also new lighting and ceiling tiles.

The Board's new space in the ground floor of 42 Broadway has been acquired and ready for the tablet unit to move in (adding over 5000 sq ft to hold and work on the tablets that are used throughout the City for election data). The lease was an amendment to the original lease at 42 Broadway which will run through 2023.

The Board worked with DCAS to renew the lease for 1 Edgewater Plaza the home of the Staten Island office and Voting Machine Facility. The lease expiration date was August 14, 2016 and a new 10 year lease with two 5 year options were negotiated with the landlord along with new upgrades, including new carpet, lighting fixtures, paint, ceiling tiles, HVAC improvements and more.

At 450 West 33rd Street 90 percent of the building work has been completed (all new floor to ceiling windows, new mechanical rooms, and lobby renovations), the building has allotted money for the Board to use to upgrade our space due to the lengthy inconvenience of the construction work. With some of that money the Board is adding electrical upgrades in rooms that were reconfigured for election night returns and canvass processing.

The Board requested DCAS to start the process to look for another facility for the Bronx office and Voting Machine Facility which is currently located at 1780 Grand Concourse. This facility has had major issues with leaks and flooding through the years, which has been a constant problem. The current lease expires in 8/31/2019 but it takes time to look and find a suitable replacement – that is why the work has started now.

The renovation at 200 Varick Street, the Board's Manhattan office, has been completed along with new workstations.



SHERWIN SUSS
Agency Chief Contracting Officer

The Procurement Department's function is to oversee and process all Board of Election contracts for goods and service to ensure compliance with the New York City Procurement Policy Board Rules (PPB Rules).

The PPB Rules were developed to ensure that all city agencies' procurement practices are uniform in application, and to provide fair and equitable treatment to all persons doing business with the city.

PREFERRED SOURCE SOLUTIONS AND MINORITY/WOMEN BUSINESS PARTICIPATION

The Board continues to aggressively expand its use of Preferred Source providers through NYS Industries for the Disabled (NYSID), receiving excellent services at competitive prices while providing employment to New Yorkers with disabilities.

The Procurement Department has been actively soliciting minority- and women-owned businesses to participate in the bidding process to provide goods and services to the Board. In this way, we hope to increase awards to minority- and women-owned businesses and help NYC reach its goal for minority/women business participation.

ACCESS FOR EVERYONE

The Board has been working to make poll sites accessible for everyone. The Procurement Department has helped by completing work on 2 large contracts which will allow the Board to purchase any ADA equipment necessary to make the poll sites ADA compliant. The Department has also recently completed drafting a large, multi-year contract which – when implemented – will provide for vendor installation of ADA equipment at the poll sites. This contract will be in force for the 2017 elections.

Electronic Voting Systems Department



JOHN NAUDUS
Director, Electronic Voting Systems

"The mission of the Electronic Voting Systems (EVS) Department is to administer and support the Board's computerized voting systems during pre- and post-election activities conducted in each of the five counties in the City of New York."

The Board's computerized voting systems administered and supported by the EVS Department include the Central Scanning and Tabulation System for Absentee, Military, Federal, Presidential and Affidavit ballots; the Election Management System for ballot marking devices (BMD); and the Poll Site Voting System (PVS) used at the poll sites on Election Day. EVS prepares these systems by populating them with the data needed for each election. EVS also works with the system providers to ensure all systems meet the unique requirements of the New York City Election process.

EVS provides assistance and support during pre- and post-election activities in each county. These activities include:

- Testing the Central Scanning and Tabulation System for Absentee, Military, Federal, Presidential and Affidavit ballots
- Writing the portable memory devices (PMD) with the specific data parameters required for each election
- Reading the PMDs that contain the results from each of the Poll Site Voting System scanners
- Re-canvassing election results
- Canvassing ballots for write-in votes
- Auditing the Poll Site Voting System results
- Auditing the Central Scanning and Tabulation System for paper ballots
- Canvassing Absentee, Military, Federal, Presidential and Affidavit ballots

The Board conducted six elections in the year 2016: the February Special Election in the Bronx; the April Presidential Primary combined with the April Special Election in Brooklyn, Manhattan and Staten Island; the June Federal Office Primary; the September State and Local Office Primary; and the November General Election. The Poll Site Voting System (PVS), the ballot marking devices (BMD), and the Central Scanning and Tabulation System for Absentee, Military, Federal, Presidential, and Affidavit ballots were used in all five elections.

UNOFFICIAL ELECTION NIGHT RESULTS REPORTING

On Election Night, poll site coordinators used tablets to transmit the unofficial election results from all active poll sites. The unofficial results on the portable memory devices (PMDs) were read into tablets. The tablets transmitted those unofficial election results to the secure file transfer protocol (SFTP) servers at the General Office.

Election Reporting Manager (ERM) servers at the General Office read the unofficial results from the SFTP servers. In periodic intervals during election night, the unofficial results were electronically transferred to the Board's website, the State Board of Elections, the Board's S-Elect system, and to the media.

In addition, the PMDs were transferred to the police precincts. Bipartisan teams of Board personnel read the PMDs into Election Night Results (ENR) tablets. The second reading of the PMDs ensures that we read any PMDs that were not read at the poll site and we send those unofficial election results to the General Office.

DIFFERENCE AND MARGIN OF ERROR BETWEEN THE UNOFFICIAL ELECTION NIGHT RESULTS (ENR) AND THE RE-CANVASSED RESULTS

General Election

Average difference between the ENR and Re-Canvassed results: 1.10%

State & Local Office Primary Election

Average difference between the ENR and Re-Canvassed results: 0.70%

Federal Office Primary Election

Average difference between the ENR and Re-Canvassed results: 1.10%

Presidential Primary Election

Average difference between the ENR and Re-Canvassed results: 1.57%

April Special Election

Average difference between the ENR and Re-Canvassed results: 1.85%

February Special Election

Average difference between the ENR and Re-Canvassed results: 8.05%

For a breakdown of the use of both the ENR Laptops and the Tablets for obtaining unofficial election night results, please see **Figures 1 and 2**.

UNOFFICIAL ELECTION NIGHT RESULTS WEBSITE

The Board published unofficial Election Night Results (ENR) on its website for all elections in 2016. EVS developed the ENR website to work in tandem with the ENR

reporting process. The Board electronically updated this website at periodic intervals, making the latest unofficial election night results available for public viewing.

The ENR website was viewed on each election night after the closing of the polls (from 9:00 pm to 9:00 am the next morning) as follows:

Election	Number of views
February Special	72,835
Presidential Primary & Special	343,508
Federal Office Primary	209,921
State and Local Office Primary	503,164
General Election	191,018

See **Figure 3** for an illustration of the number of views the ENR website received on election night.

ARCHIVAL OF PORTABLE MEMORY DEVICE (PMD) DATA

With Board approval, EVS made it possible to reuse portable memory devices (PMD) prior to the two year maturity date required by *Election law §3-222. Preservation of Ballots and Records of Voting Machines*. To achieve this goal, EVS developed and implemented a strategy to retrieve data from PMDs used in an election or testing and stored the data on a dedicated server. The server maintains the data retrieved from the PMDs for the mandated two year timeframe, and the PMDs are prepared for use in the next election. To accomplish this task, EVS developed the software used to extract the data from the PMDs. EVS also developed detailed procedures and tracking materials to use in conjunction with this software.

Teams of bipartisan personnel completed this work in each of the five counties using the software, procedures and tracking materials provided by EVS. EVS provided onsite guidance and support throughout the entire archival process.

BALLOTS

For all of the Elections in 2016 combined, more than 4,297,000 ballots were cast in the City of New York. About 299,000 ballots were Absentee, Military, Federal, Presidential, and Affidavit ballots that were processed by the central scanning and tabulation system, or manually tabulated. In addition, more than 3,998,000 paper ballots were cast at poll sites, and scanned and tabulated by the Poll Site Voting System (PVS). See **Figure 4** for an illustration of the ballots cast in 2016.

Electronic Voting Systems Department Cont'd

EVS continues to explore and develop innovative ways to improve the Board's computerized voting systems and enhance the voting experience for the City of New York. Please see **Figure 5** for a historic perspective of the mechanical and electronic voting systems used since the founding of the Board of Elections in the City of New York.

Election Night Results Portable Memory Device (PMD) Count			
	Total PMDs Used	PMD Data Received	Percentage Received
February Special	83	78	93.98%
Presidential Primary & Special	3,159	3,074	97.31%
Federal Primary	1,645	1,623	98.66%
State and Local Primary	2,447	2,412	98.57%
General	3,678	3,575	97.20%

Figure 1

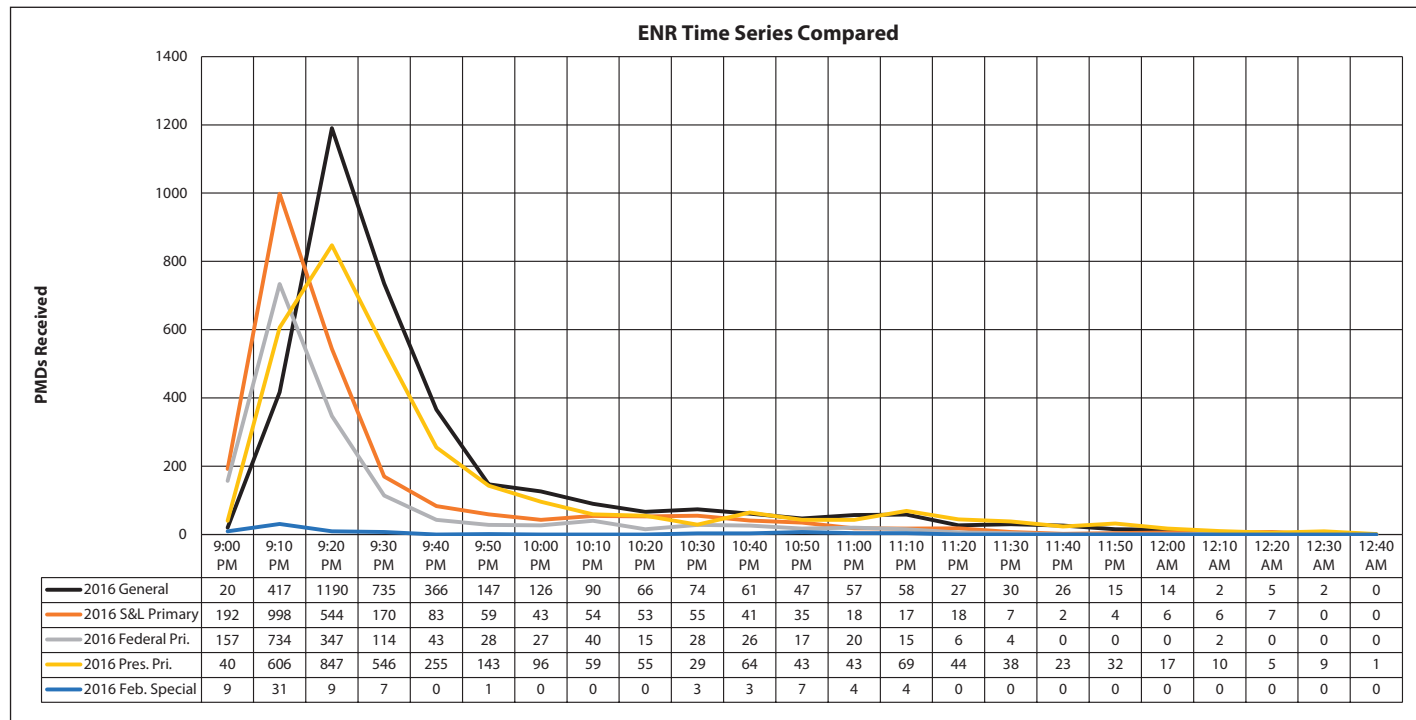


Figure 2

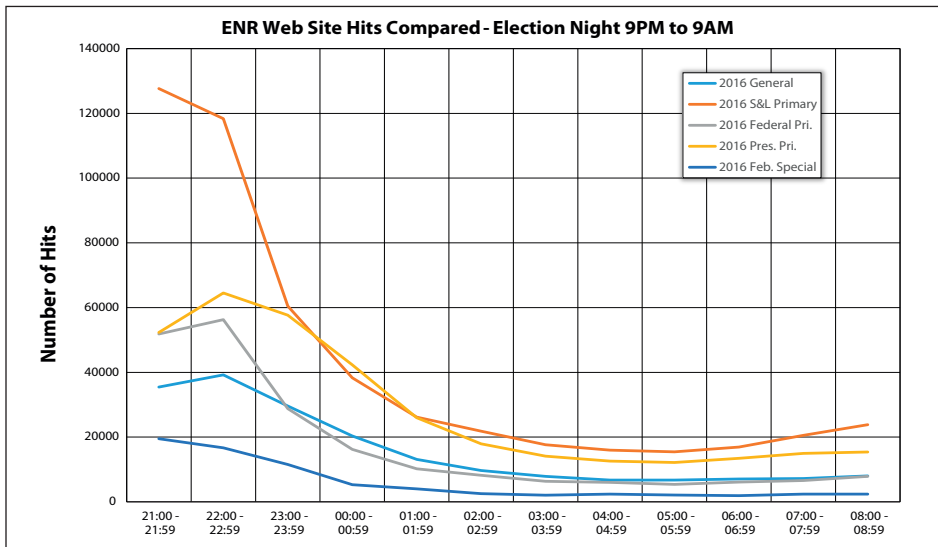


Figure 3

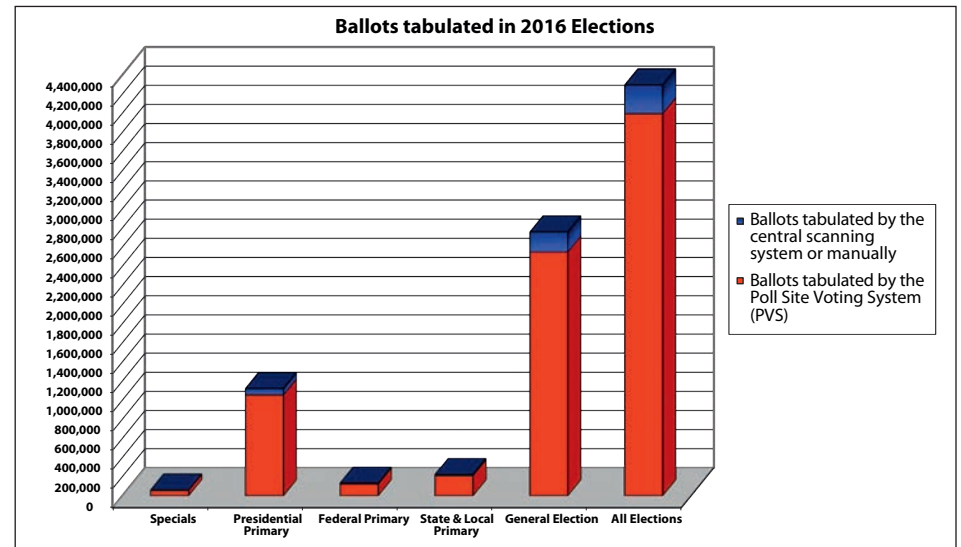


Figure 4

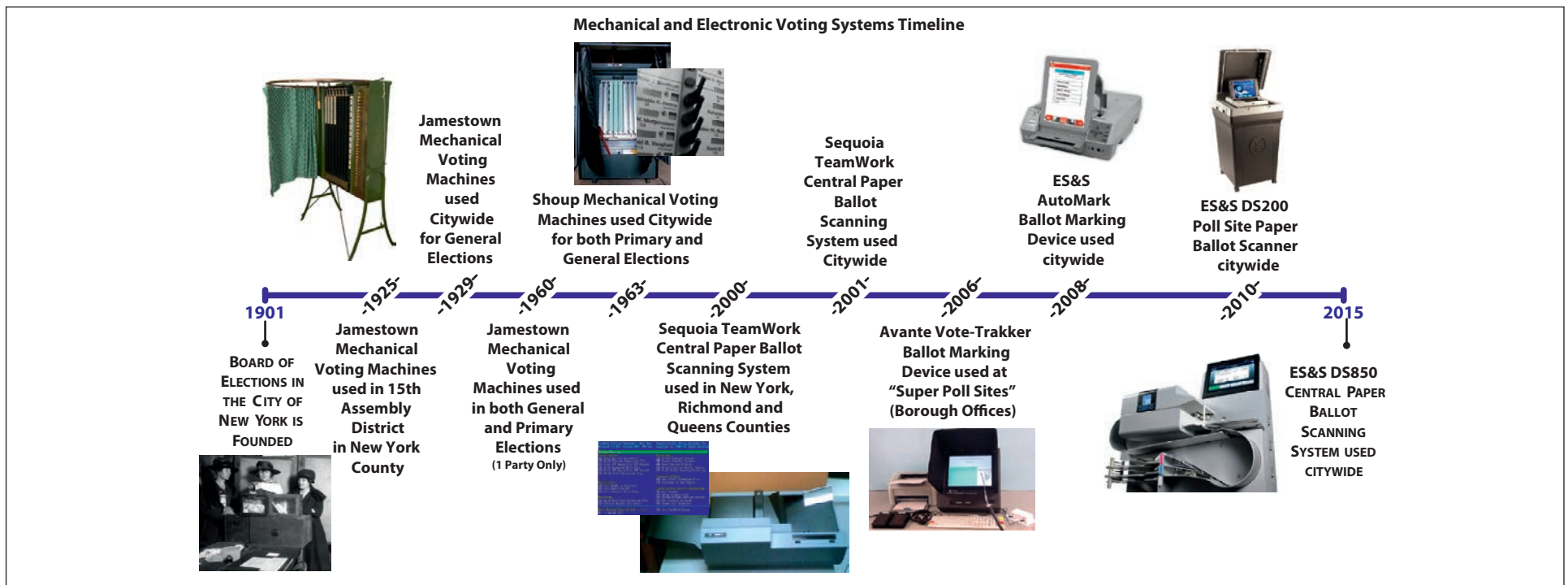


Figure 5

Personnel and Records Management



NINA CRISPINO
Director of Personnel /
Records Management Officer

The Personnel Department is responsible for the well being of all employees at the Board of Elections. As a new employee is processed, in addition to completing the appropriate paperwork, both the Policies and Procedures Handbook and Conflict of Interest Board (COIB) Manual are provided and an Identification Card is issued.

Health Insurance, Management Benefits Fund, Deferred Compensation and Pension Benefits are the responsibilities of the Personnel Department as well as the processing of all Workers' Compensation claims. All benefits are updated as needed throughout the tenure of the BOE employee. Verification of Employment and Unemployment Benefits applications are also processed through this Department.

For those employees in need of counseling, referrals are made through this office to the Employee Assistance Program (EAP). To encourage employees in need of the varied services offered by the EAP and make them comfortable about seeking help, a high level of confidentiality must be maintained.

Fact-finding inquiries are held when there is a complaint of harassment. What action, if any, is determined by a bipartisan panel, consisting of the Director of Personnel and a member of the Legal Department and/or other staff member.

Matters of discipline fall under the jurisdiction of the Personnel Department. Alleged Violations of the Policies and Procedures Manual are investigated and hearings held as necessary.

Disciplinary hearings are conducted and actions are taken under the direction of the Commissioners of Elections. If a hearing determines that a violation has occurred, the employee may be reprimanded or disciplined. The disciplinary actions may include probation, suspension or termination.

The Director of Personnel also serves as the Records Management Officer for the Agency, monitoring the storage and disposal of Agency Records following the guidelines set forth by the NYS Retention and Disposition Schedule.



GERALD SULLIVAN
Finance Officer

2016 ANNUAL STATISTICAL INFORMATION REPORT

Financial Summary

Budget	
Total Budget Appropriated for 2017	\$128,534,307
Increase or decrease from previous year's budget	(\$13,862,569)

2016 Budget Review	
BOE Staff Salaries (including Commissioners, Deputies, all Support Staff)	\$34,270,021 (est)
Custodian & Technician Salaries (full-time staff)	\$37,016
Printing (excluding cost of printing ballots)	\$3,691,178
Supplies	\$650,000
Training	\$189,250

Presidential Primary Election-Specific Costs	
Party Rep Salaries - Primary	\$200/day
Poll Site Rentals - Primary	\$139,968
Moving Costs for Machines and/or BMDs - Primary	\$1,284,435
Absentee Ballot Costs for Primary	\$330,000
Election Day Ballot Costs for Primary	\$1,170,000
Election Inspector Costs for Primary	\$4,832,975
Technician Costs for Primary (part-time or contract staff)	\$1,583,640
Cost of legal ads - Primary	\$429,706

Federal Primary Election-Specific Costs	
Party Rep Salaries - Primary	\$200/day
Poll-site Rentals - Primary	\$65,157
Moving Costs for Machines and/or BMD's - Primary	\$282,911
Absentee Ballot Costs for Primary	\$204,162
Election Day Ballot Costs for Primary	\$306,241
Election Inspector Costs for Primary	\$2,708,297
Technician Costs for Primary (part-time or contract staff)	\$140,400
Cost of legal ads - Primary	\$185,005

State & Local Primary Election-Specific Costs	
Party Rep Salaries - Primary	\$200/day
Poll-site Rentals - Primary	\$163,065
Moving Costs for Machines and/or BMD's - Primary	\$934,471
Absentee Ballot Costs for Primary	\$240,000
Election Day Ballot Costs for Primary	\$870,000
Election Inspector Costs for Primary	\$4,426,889
Technician Costs for Primary (part-time or contract staff)	\$1,150,000
Cost of legal ads - Primary	\$472,576

General Election-Specific Costs	
Party Rep Salaries - General	\$200/day
Poll-site Rentals - General	\$162,705
Moving Costs for Machines and/or BMD's - General	\$1,235,397
Absentee Ballot Costs for General	\$652,975
Election Day Ballot Costs for General	\$1,908,778
Election Inspector Costs for General	\$6,923,003
Technician Costs for General (part-time or contract staff)	\$1,470,000
Cost of legal ads - General	\$355,192

Staff Summary	
Democratic Commissioner Salary	\$300/meeting
Republican Commissioner Salary	\$300/meeting
2- or 4-Year Term	4
Full- or Part-Time	per diem

Executive Management	
Executive Director Salary	\$209,250
Deputy Executive Director Salary	\$192,674
Full- or Part-Time	Full-Time

Employees <i>(excluding Commissioners & Deputies)</i>	
Number of Full-Time Board Employees	475
Number of Part-Time Board Employees	0
Number of Temporary or Seasonal Board Employees	100-500

FY17 BOE Budget Summary

	Amounts	# Positions	# Contracts
Adopted Budget	123,746,310	475	40
Current Modified Budget	128,534,307	475	40
Pending MN	0	0	0
Budget Reserve	0		
Pre-Encumbered	1,841,047.75	Obligations	86,627,830.49
Encumbered	10,998,390.31	Commitments	88,468,878.24
Expenditures	75,629,440.18	Unobligated Balance	41,906,476.51
Unliquidated	591,967.79	Uncommitted Balance	40,065,428.76
Liquidated	75,037,472.39		
Post Closing Adjustments	0.00	Pending MY Accruals	0.00

Office of the General Counsel



STEVEN H. RICHMAN
General Counsel



RAPHAEL SAVINO
Deputy General Counsel/Director
of Campaign Finance Enforcement

The Office of the General Counsel (“Office”) provides legal advice and guidance to the Commissioners of Elections and to the staff of the Board of Elections in the City of New York (“Board”) on a wide range of matters relating to ballot access, the conduct of elections, and agency administration. The Office consists of the General Counsel, the Deputy General Counsel, administrative support staff and from time to time, one or more contract staff attorneys as well as law student interns.

ADMINISTRATION

The Office recommends to the Commissioners revisions of formal Board policies and procedures to ensure compliance with applicable statutes and regulations. The Office provides legal advice and guidance to Board staff as requested. The Office also conducts all administrative hearings required under the collective bargaining agreement for Board employees. The Office act as a liaison with the New York City Conflicts of Interest Board with respect to the administration of applicable conflicts of interest provisions found in Chapter 68 of the New York City Charter.

LEGISLATIVE ACTIVITIES

The Office regularly monitors all legislative and judicial action that impacts election administration and advises the Commissioners on all legal developments affecting the administration of elections, including statutory compliance with City, State, and Federal mandates related to the Voting Rights Act, the Military and Overseas Voters Empowerment (MOVE) Act, the Help America Vote Act (HAVA), the New York State Election Law, the New York City Charter, and related judicial directives. In addition, the Office drafts for consideration by the Commissioners the Board’s annual recommendations for revisions in the State Election Law for presentation to, and consideration by, the State Legislature and the Governor.

COMPLIANCE ACTIVITIES

The Office advises the Commissioners on all elements of the Board's legal compliance with all applicable statutory and regulatory requirements. Any proposed change in election administration affecting voters is reviewed by the Office before being presented to the Commissioners for approval. The Office acts as the Board's liaison with other governmental regulatory and investigatory agencies, including the U.S. Department of Justice, the local United States Attorneys' offices, the New York State Attorney General's Office, the District Attorneys of the five counties within the City of New York, the New York City Department of Investigations, and the Inspectors General for various City agencies.

BALLOT ACCESS

The Office drafts for consideration and adoption by the Commissioners all election calendars and the proposed Rules for Designating and Independent Nominating Petitions for each election cycle. The Office also oversees all aspects of the process for candidate filing and Board review of designating and nominating petitions, cover sheets and/or certificates. The Office maintains a good working relationship with the New York State Office of Court Administration with respect to the Judiciary's activities in connection with the electoral process.

LITIGATION

The Office acts as the Board's principal point of contact with the New York City Law Department, which usually represents the Board in all litigation matters involving the Board of Elections, its operations, and personnel.

FREEDOM OF INFORMATION

The Office receives, processes, and compiles the agency records sought by the public under the New York State Freedom of Information Law. In collaboration with the appropriate Board staff, the Office coordinates the photocopying of records, gathering of electronic documents for transmittal, and scheduling of physical inspections of original documents by those individuals and entities seeking such public records. In addition, prior to its release, the Office reviews and redacts any information contained in the public records that by law are exempt from disclosure. It also processes any appeals for submission to the Commissioners of Elections.

Management Information Systems Department (MIS)



STEVEN FERGUSON
Director, MIS

OVERVIEW

The magnitude and number of election events held in 2016 established a challenging period for MIS Department development and operational programs. A period that again taxed our resources and required innovative ideas to meet our mission requirements which include operational and program support for all staff and borough offices and VMFs. What we accomplished in 2016 would not have been possible without the dedication and efforts of key staff members and our consulting/development group (IMI, SageSmith, and N-Tier).

The following is a summary of our major information systems and operational support programs for 2016. These programs included planning, requirements determination, design, development, testing, training, and implementation within the integrated framework of our **Election Information Systems (EIS)** and the major **EIS Core and EIS Mobile** subsystems. It also required the application of resources to address voter registration commonality issues with the NY State system and resources to interface with a DoITT lead security assessment to address local and national concerns involving the protection and integrity of our election information systems and databases.

MIS DEPARTMENT RESPONSIBILITIES INCLUDE:

1. Continued development and maintenance of the BOE's Election Information Systems (EIS)
2. Operation and management of two major data centers (Executive Office (EO) & Disaster Recovery Site (DR) in Queens
3. Oversight of Mobile and Cloud Operations
4. User support, email and data security systems
5. Data networks, phone systems
6. Internal BOE Printing Operations
7. Development and support of other staff applications
8. Interfacing with other organizations and agencies including:
 - a) New York State Voter Information System
 - b) DMV Voter Registration

Management Information Systems Department (MIS) Cont'd

- c) NYC Agencies Voter registration EVR/MA
- d) Interface for Election Night Results (ENR)
- e) ES&S Systems and Functions
- f) Interface with City Planning for Re- Districting and Voter Registration Address Normalization

SECURITY ASSESSMENT PROGRAM

Due to the national concern which developed concerning the hacking of Voter registration and election systems, the BOE initiated a Security Assessment Program through DoITT. The MIS department was the primary interface with the DoITT lead Security Assessment Program for all network, database and information system with the exception of voting processes, network, and results reporting directed by EVS. MIS worked with two DoITT contractors on this effort: FireEye-Mandiant and CrowdStrike.

MIS INFORMATION SYSTEMS DEVELOPMENT PROGRAMS 2016

EIS (S-ELECT/S-ELECT 7) CORE AND MOBILE APPLICATION GROUP

In 2016 there were a significant number of development and enhancement projects which spanned the EIS (S-Elect/S-Elect 7 Core and Mobile Application Group). Projects which had to be implemented to meet multiple 2016 election deadlines. These efforts varied from modifications and enhancements to major development projects. All of which had to be developed, tested and implemented under tight election deadlines requiring priorities and progress being continuously reviewed with Executive Management.

For the following EIS, application areas a total of **ninety-three** projects including enhancements, modifications, and major new developments were completed in 2016:

1. Poll Worker
2. Candidate Processing
3. Inventory Management (ADA Equipment)
4. Facilities
5. Election Night Reporting

6. Election Reporting Schema
7. Election Day-Call Center Reporting

These projects also included major new development in the following Mobile applications:

1. Election Day Worker (EDW) Site Redesign with NYC Portal to support BoE's major recruitment/outreach effort
2. Major Enhancements to Election Responder (ELR)
3. Improvements to Poll Site Locator
4. InSite – a major new structural development project which was completed and implemented in 2016 to support a series of poll site tablet initiatives (Tablet Heartbeat Monitor, Real-time Messaging, Ticket Updates, Poll Worker Check-in, Results Transmission Launcher, ED Table Lookup and Platform for Future Poll Site Management Applications). It is an infrastructure layer which provides:
 - a) Single point of entry for launching multiple actions that are critical on Election Day
 - b) A quick start wizard to guide new/infrequent user base
 - c) Context sharing across apps
 - d) Customizable "Action Launcher" organizes and lists each explicit action a user can take
 - e) Integrated Tablet Support actions
 - f) Targeted Messaging, from city-wide down to a specific Poll Site
 - g) OS-level integration of Notifications
5. Election Bin Acceptance Testing for tracking Trucker Deliveries of Election Day Equipment
6. Online Poll Worker Assignment Confirmation System was implemented along with a blast email notification of assignment reminders

There were also major resources applied by SageSmith in the management and enhancement of our cloud and mobile operations, security and scalability.

Management Information Systems Department (MIS) Cont'd

EIS (AVID- Voter Registration) CORE AND MOBILE APPLICATIONS

A Presidential Election year requires MIS to provide major support for our voter registration system (AVID). This support was especially critical in 2016 and spanned not only the operational and research reporting and information requests but a major set of work with NYS to ensure the commonality of our BOE and NYS databases. In addition to these efforts we:

1. Supported the Expansion of the DMV on-line voter registration program
2. Integrated the new NYS Registration Form
3. Planning, designing and developing AVID Releases 6.0, 6.5, and 7.0 (2017, development, testing and implementation)
4. Development of a more user-oriented Voter Notice and Avid Reporting Process (2017 development, testing and implementation)
5. Initial planning and design of the Electronic Voter Registration Email Option (2017, development, testing and implementation)
6. Designed and developing NYC Voter Lookup (2017 final development, testing and implementation)
7. We continued to support the NYC Agencies Electronic Application Submission Program

DATA CENTER & GENERAL SUPPORT

Our hardware, systems software, and network interface programs are managed and operated as the infrastructure and operational parts of our MIS program. In summary, MIS manages two major data centers (Executive Office (EODC) and Queens DR(QDR) Sites) in addition to nine operating locations with over 500 workstations, 100 printers and scanning devices with associated servers, and associated network equipment. Including:

1. MIS Infrastructure, Data Centers, System Software, Data Security, Backup Operations and Processing Support
2. VM infrastructure allocation and operations

3. Maintenance of all Application Authorizations and Access Security
4. Management and Operation of the Help Desk Process
5. Maintaining and Managing the internal and external Email and Exchange System

In 2016, we finalized the Queens Office new DR Site with all the required infrastructure and VM capabilities.

EMAIL AND EXCHANGE PROGRAM

The Email and Exchange systems which were modified in 2015 were made operational in 2016, to address our new and expanding requirements for interfacing with multiple email facilities while maintaining the integrity and security of our internal system.

The installation of Exchange 2010 has been completed and the BOE is in the process of migrating individuals to the new Exchange level. This will provide the ability, for a controlled mail forwarding process for mobile email access, through Office 365 Accounts.

In 2016 the MIS Staff responsible for Email and Exchange continued to provide support services to all BOE Executives, staff personnel, and Commissioners with mobile phone and email facilities.

TABLET PROGRAM

The Tablet Program has been a multi-departmental program in which the MIS department continues to play an important role providing

1. Election Information System (EIS) applications interface and interconnectivity
2. Interfaces with Mobile EIS applications Election Responder, Poll Site Locator and Table Finder
3. Network support for Tablet facility at 42 Broadway
4. General Technical Support and Guidance

DATA NETWORK & VOICE SYSTEM

The MIS Network Group is primarily responsible for the BOE WAN, LANs, and VoIP Telephone Systems at all BOE Central, Borough and VMF locations. To serve computing and communications needs for the agency, there is a Primary datacenter and a DR site in Queens. Additionally, there are nine different LAN facilities servicing all BOE locations.

All BOE locations are interconnected via a primary Wide Area Network (including backup network capabilities) to the two data centers. The security of the internal network is maintained through firewalls which are monitored and maintained by MIS Staff.

The network group is responsible for maintaining 24x7 secure connectivity from the BOE data centers to a number of outside entities, such as the New York State BOE data center, City Agencies, Voting Machine vendors, and cloud-based resources.

This year we installed the network facility to support the new Tablet Facility at 42 Broadway.

PRINT SHOP

In 2016, the Print Shop produced over two million pieces of mail. It also published information such as Street Finders, Enrollment Books, Political Calendars, Voter Notices, Poll Worker Letters, Poll Site Accessibility Letters, Poll Site Change Notices, Renewal Notices, Notices to Train, Notices to Work, District Maps, Coordinator Handbooks, Availability Notices, CRU Letters, Transmittal Receipts, and backup Poll Books. All in support of the 2016 election events.

The Print Shop provide an important facility for the Board to communicate with the voting public, poll workers, publish training and instructional material and information, and provide required information for political constituencies and interests.

Payroll



AMANDA BERINATO
Director of Payroll

The Payroll Department is responsible for ensuring that all employees at the Board of Elections are paid properly according to their timesheets from City Time.

The following tasks are performed by the Payroll department:

- Managerial Raises
- Non-Managerial Union Raises
- W-4 Changes & Direct Deposit (this is done for all Poll Workers as well)
- Stop Payments
- Processing of FMLA time, Advance of time, and Worker's Compensation time
- Maintain accurate Temporary & Permanent Employee lists
- Present Overtime & Vacancy Reports to Commissioners bi-weekly

Our mission in the Payroll Department is to help all employees to the best of our ability. We practice an open door policy where staff can feel comfortable to come to the Payroll department for any assistance that they may need concerning their pay.

Customer Service



DANIEL LAVELLE
Coordinator of Customer Service

The mission of the Customer Service Department (CS) is to provide information requested by any and all New York City residents.

The CS Department is comprised of three components: (1) Inbound Call Center; (2) Reception Counter; and (3) Online Inquiry. The department accommodates any requests and is operational throughout the year. CS provides language support in English, Spanish, Cantonese, Mandarin, Korean, Bengali, Hindi, and Punjabi. CS handles a diverse range of calls, e-mails, on-line chat requests, and in-person inquiries. These include requests concerning anything from a voter's registration status or poll site location, to information about the Poll Site Voting System. In addition, the Department also supports field staff and poll workers in tracking and resolving incidents that occur at the poll sites during an election.

TOTALS FOR 2016

	2016 Yearly totals	4/19/16 Presidential Primary	6/28/16 Federal Primary
Calls	117,152	5,991	1,010
Chat	4,294	310	24
Email	8,195	239	25

	9/13/16 State and Local Primary	11/8/16 General Election
Calls	3,062	7,261
Chat	30	45
Email	55	268

New Functions added in the last quarter of 2013 include web chat and email. These applications can be found on the Board's website vote.nyc.ny.us under the contact us page.

Ballot Management Department



THOMAS SATTIE
Ballot Management Supervisor

The Ballot Management Department is responsible for the proofing, ordering, delivery, and maintenance of all ballots used in elections in the City of New York. Additionally, we work in conjunction with the Board's Language Assistance Program's Coordinator and Deputy Coordinators to ensure all ballots are translated properly and in a timely manner into all languages required by Section 203 of the Federal Voting Rights Act.

In 2016 the Board conducted five elections: a Special Election on February 23, a Presidential Primary on April 16, a Federal Primary on June 26, State and Local Primary on September 13, and General Election on November 8.

Along with other innovative ideas the Board has used to improve ballot readability, in New York, Kings, and Queens Counties for the 2016 General Election the Board printed a "two-sided" ballot, meaning offices and candidates appeared on both sides of a single piece of paper. The sheer amount of offices and candidates up for election in these counties would not allow the entirety of the ballot to appear on one side in 12 point type, so we decided on implementing a two-sided ballot instead of a two-page ballot. The main concerns with two page ballot were poll worker related and assuring the scanners counted the ballots properly. The Board also approved having all Legislative offices on one side of the ballots and all Judicial offices on the other, feeling that would lessen confusion as well.

That proved to be a good strategy, as voter confusion over the two-sided ballot was kept to a minimum and it allowed for all offices and candidates, in all counties, to appear in an easily readable font type.

Additionally, in 2016 the Board submitted numerous recommendations for law changes to the New York State Legislature to address concerns such as small type, difficult-to-follow instructions, and overall readability.

In closing, the Ballot Management Department hopes to continue its mission of producing clear and easy-to-understand ballots for all voters in the City of New York to vote on and have their voices heard.

Poll Site Devices Unit



STEPHEN THOMPSON
Manager, Poll Site Devices

TOTALS FOR 2016

A new unit within the Board of Elections, Poll Site Devices, is responsible for the maintenance, testing, preparation and deployment of tablets to training classes, field staff and poll sites.

One tablet was deployed to every poll site for the April Presidential Primary, June Federal Primary and September State & Local Primary. For the November 2016 Presidential Election, two tablets were deployed to every poll site.

For 2016, tablets provided the following functions:

Field Staff (Poll Site Monitors and Technicians)

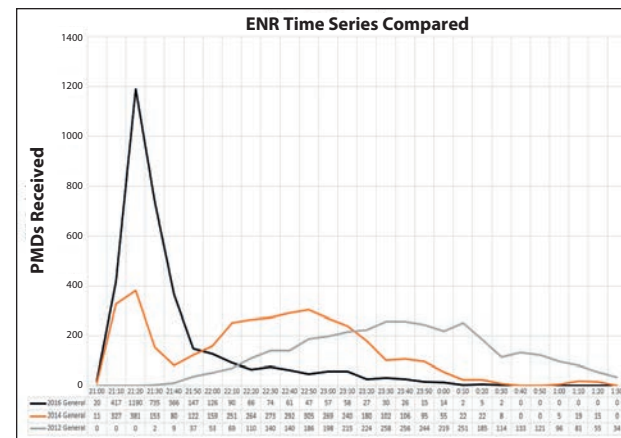
Election Responder – real-time reporting, tracking and resolving of Election Day incidents via the tablet

Poll Site (Coordinators and Information Clerk)

Poll Worker Check-In – uses QR code on Poll Worker Notice to Work to check-in Poll Workers and relay this information back to the Board offices

Table Finder - quickly identified ED table for voter in the poll site using a simple touch based, no typing system

Election Night Reporting – secure transmission of unofficial election night results from the poll site to a publically accessible website



ADA Coordinators



ARIEL MERKEL
ADA Coordinator



SEAN GERLIS
ADA Coordinator

The Board of Elections is pleased to announce our new Americans with Disability Act Coordinators (ADACs), Ariel Merkel and Sean Gerlis, who joined our team effective of October 17, 2016. The ADACs manage the newly created Accessibility Unit.

The Board of Elections in the City of New York conducts honest and fair elections from local to federal levels for all registered voters, including voters with disabilities. The ADACs are responsible for ensuring the BOE, as a government agency and employer, are in compliance with the ADA. The ADACs promote inclusive practices and ensure all BOE environments are fully accessible.

The ADACs provide support and augment the BOE's ongoing efforts to ensure that the voting process in New York City is fully accessible to all voters, including voters with disabilities. The scope of this aspect of our work ranges from ensuring that each poll site is physically accessible to voters with mobility impairments, to ensuring that poll workers are adequately trained on how best to assist voters using various adaptive equipment, such as the Ballot Marking Device.

The ADACs not only ensure voters with disabilities have access to an inclusive voting process throughout all five boroughs, but also that BOE employees receive appropriate workplace accommodations in order to maintain top-quality performance. The Board of Elections is an Equal Opportunity Employer and we encourage all qualified applicants to consider a career with us!

A background image showing the silhouettes of a large crowd of people, likely at a public event or election, with some individuals holding up their phones to take pictures.

**PREPARED UNDER THE DIRECTION OF THE
COMMISSIONERS OF ELECTIONS**

Maria Guastella, PRESIDENT

Frederick M. Umane, SECRETARY

Jose Miguel Araujo

John Fleteau, Ph.D.

Lisa Grey

Michael Michel

Michael R. Rendino

Alan Schulkin

Simon Shamoun

Rosanna Vargas

Prepared Under The Direction of
Valerie Vazquez, Director of Communications and the Commissioners of Elections

Board of Elections in The City of New York
Executive Office, 32 Broadway, New York, NY 10004-1609
www.vote.nyc.ny.us
866-VOTE-NYC



Commissioners of Elections

Maria Guastella, President
Frederick M. Umame, Secretary

Jose Miguel Araujo
John Flateau, Ph.D.
Lisa Grey
Michael Michel

Michael R. Rendino
Alan Schulkin
Simon Shamoun
Rosanna Vargas



Board of Elections in the City of New York